

Admission free

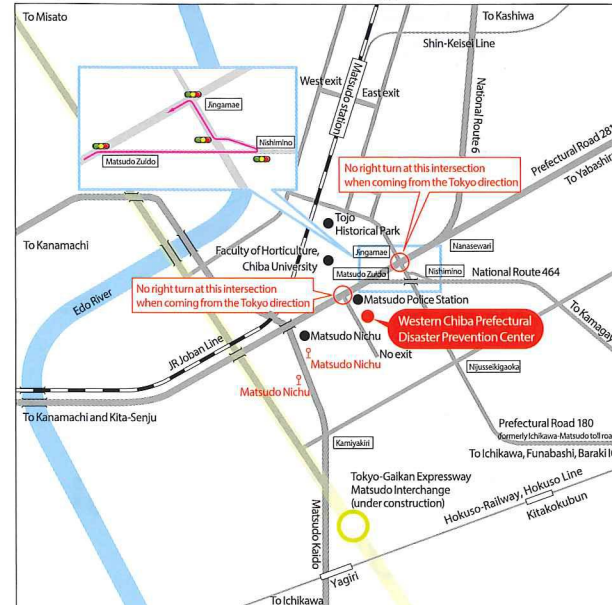
### Western Chiba Prefectural Disaster Prevention Center

558-3 Matsudo, Matsudo City, Chiba Prefecture 271-0092  
Tel 047-331-5511 Fax 047-331-5522

- Open hours: 9:00 to 16:30
- Closed on Tuesdays (closed the following day if Tuesday is a national holiday) and during the New Year Holidays

Advance booking is essential for groups of 10 people or more.

<http://www.bousai-chiba.jp>



\* Matsudo Interchange is planned to open in fiscal 2017.

#### Access

- From JR Matsudo station West exit, Bus stop 1, take the bus bound for Ichikawa station (7 min)
- From JR Ichikawa station North exit, Bus stop 1, take the bus bound for Matsudo station or Matsudo Eigyocho (20 min)
- From Yagiri station (Hokuso Line), Bus stop in the rotary in front of the station, take the bus bound for Matsudo station or Matsudo Eigyocho (8 min)
- For all of the above options, get off the bus at the Matsudo Nichu bus stop and then walk for 8 minutes
- Walk from JR Matsudo station (25 min)

#### Parking area (free)

12 parking spaces for vehicles for ordinary visitors, 1 for disabled visitors, 4 for large buses

#### Designated administrators

AK Group  
(ANA SKY BUILDING SERVICE Co., Ltd., KSP Co., Ltd., KSP·WEST Co., Ltd.)



Instructors give visitors tours of the Western Chiba Prefectural Disaster Prevention Center.

The tours start at:

**9:00 to 11:00**

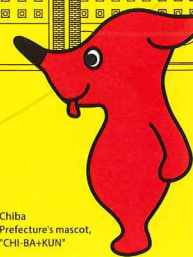
**13:00 to 15:40**

- Tours are designed to take 60 to 90 minutes.
- The typical waiting time before a tour starts is 20 to 30 minutes.

\* Waiting times may be longer when the center is busy.

Experiential learning facility for disaster prevention

# Western Chiba Prefectural Disaster Prevention Center



Chiba Prefecture's mascot, "CHI-BA-KUN"





## The science of wind and flood damage

Learn about the mechanism of wind and flood damage and how to protect yourself from natural disasters, and experience a realistic simulation of the mighty power of 30m/s wind-speeds and 30 mm/h rainfall.



## Emergency relief activities

Get hands-on experience and learn emergency relief skills for disasters, including instruction in CPR using our "Resusci Anne" training manikin.



## Evacuation and safety

Deepen your knowledge about the reality of fire-related casualties, which are mainly caused by smoke, and understand how smoke behaves so that you can learn how to safely escape from a smoke-filled environment, using our simulation equipment.



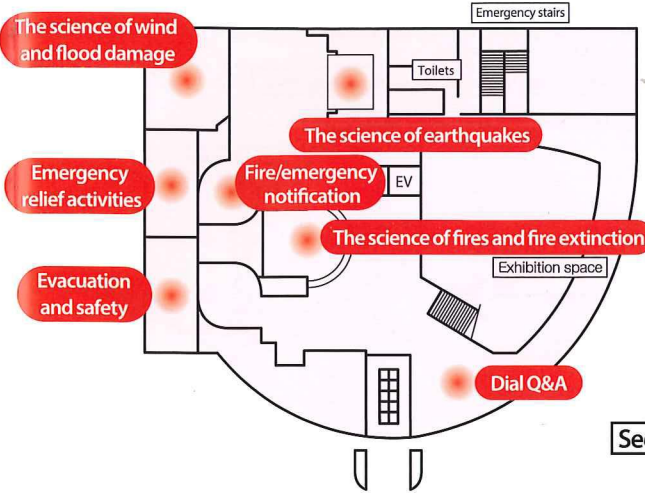
## Audiovisual room

See footage that shows the frightening reality of natural disasters.



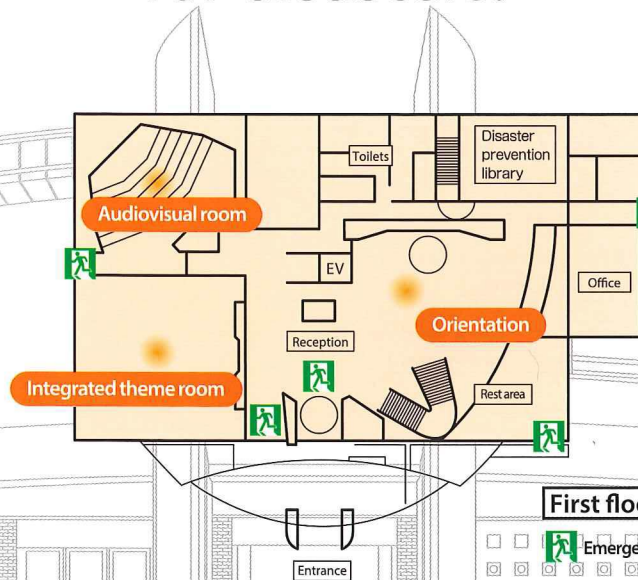
## Integrated theme room

Watch recreations of urban disasters caused by earthquakes. These stories proceed in a dialogue style that incorporates the observations of people who actually experienced such situations. In this way, you can learn about and experience disaster prevention.



Second floor

# Experience various countermeasures for disasters!



First floor

## The science of earthquakes

Experience earthquakes equal in strength to the Great East Japan Earthquake and the Great Hanshin-Awaji Earthquake in the center's earthquake simulator, and learn the mechanism of earthquakes, what to do if an earthquake strikes, and the importance of being prepared during ordinary times.



## Fire/emergency notification

Use the center's emergency 119 reporting simulation equipment to practice calling fire fighters and ambulances and learn how the notification process works.



## The science of fires and fire extinction

Learn about fires and the methods of initial fire extinction, and practice fire extinguishing with the center's drill-purpose fire extinguishers.



## Dial Q&A

Take a computer-based quiz to learn about disasters, disaster prevention, and evacuation.

\* This is not included in the tours facilitated by the instructors. If you wish to use this service, let our instructor know at the end of your tour.



## Orientation

In this area, you will learn about the power of earthquakes, fire, wind and floods, and the importance of preparedness for disaster prevention.



Western Chiba Prefectural Disaster Prevention Center

Experiential learning facility for disaster prevention

