



Matsudo City Water Hazard Map

The Water Hazard Map has been prepared to enable residents to make daily preparations and take action against heavy rainfall, such as localized torrential rains that exceed the capacity of the sewerage system (storm sewers). This map is only a prediction, and depending on the circumstances flooding might occur even in uncolored areas. Please exercise caution. This information can also be viewed on the Matsudo City website.

Assumed Conditions

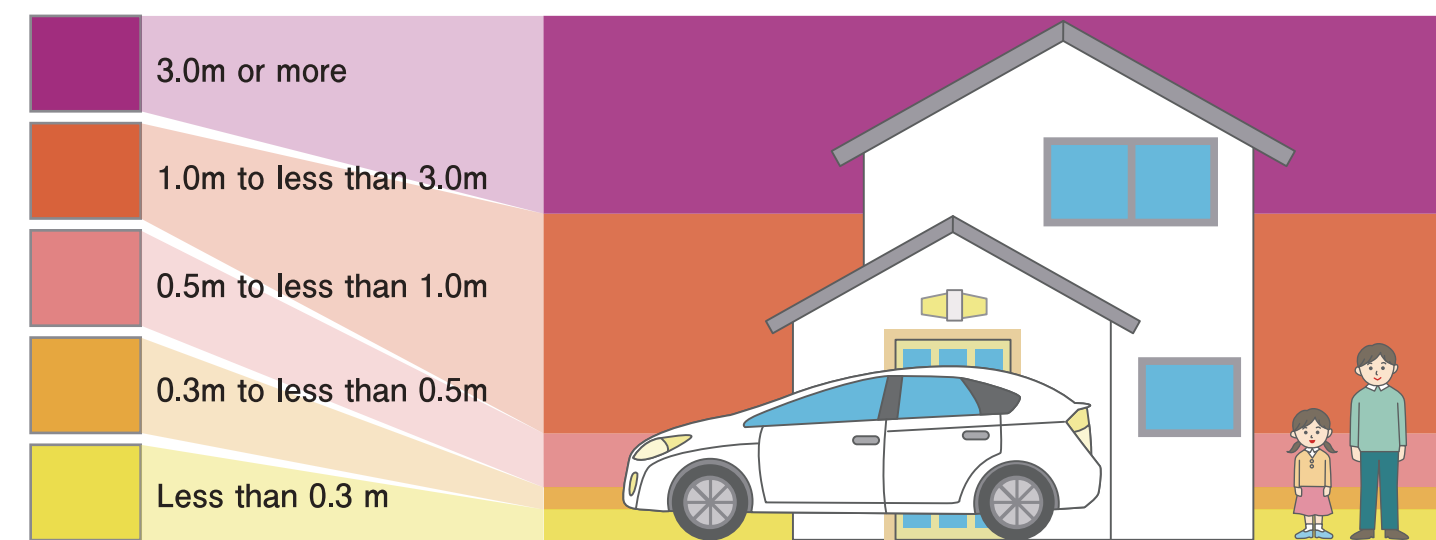
71.0 mm of rainfall per hour

Note: This was the heaviest amount of rainfall recorded in history (52 years) at the Chiba Special Regional Weather Recording Station (formerly the Chiba Weather Recording Station) (October 5, 1975)



Flooding Depth - Legend and Guide

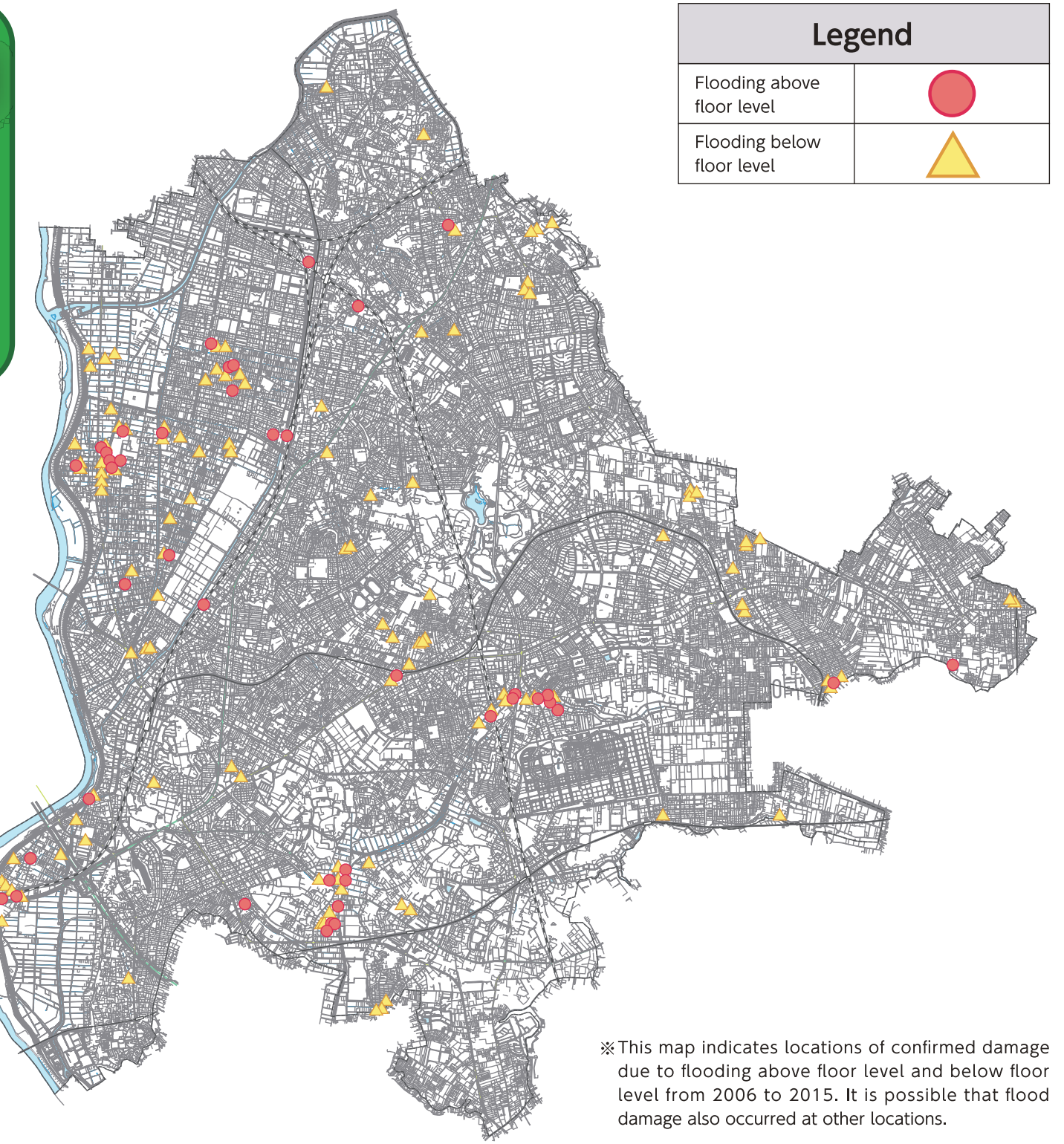
On the Water Hazard Map, predicted depths of flood waters are indicated by different colors. As a rule of thumb, a depth of 0.5 m would almost reach an adult's knee.



Note: Less than 0.3 m is roughly an extent to which sidewalks are submerged, and automobile travel is sometimes impeded.

Recorded Flooding in Matsudo City

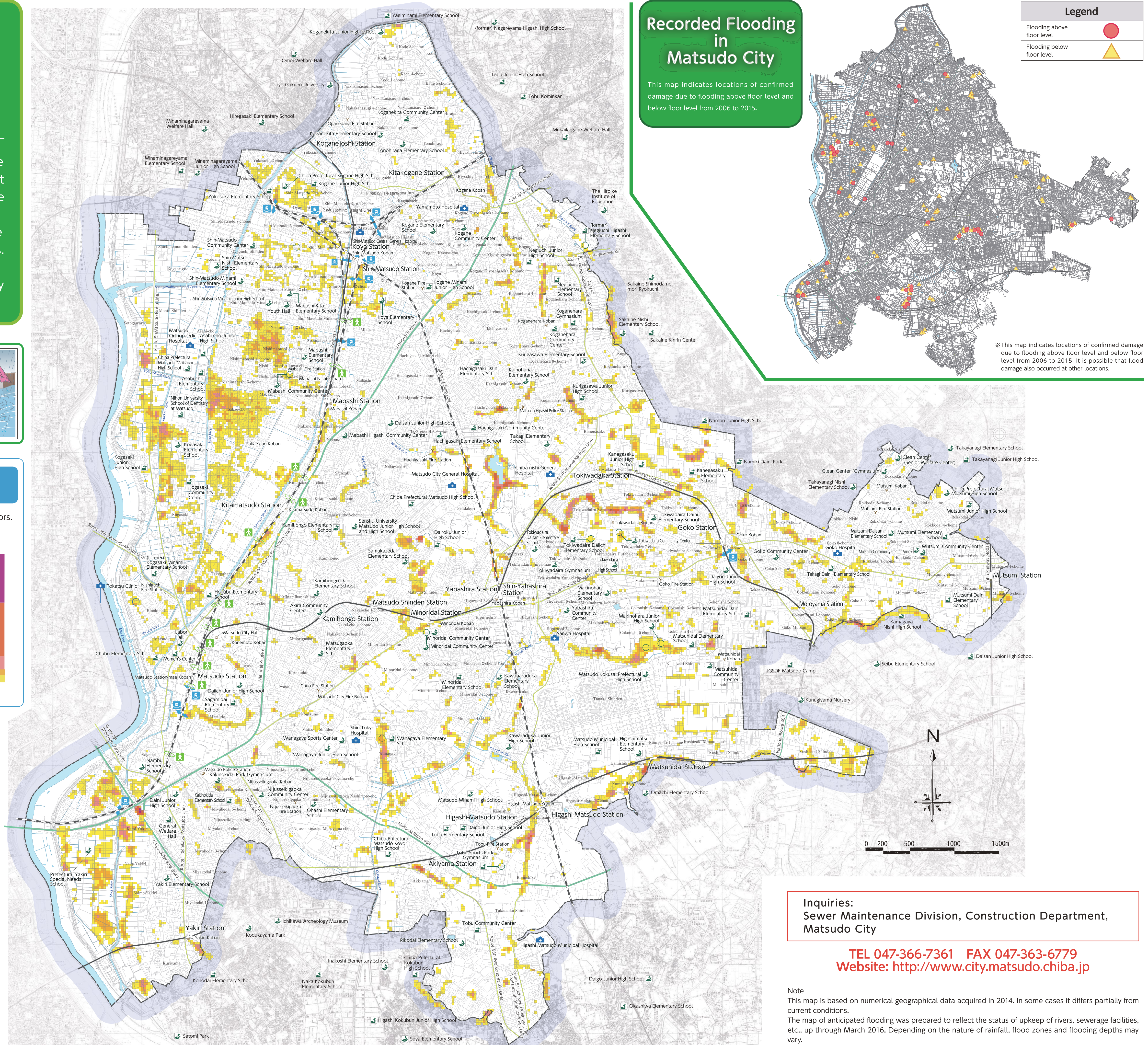
This map indicates locations of confirmed damage due to flooding above floor level and below floor level from 2006 to 2015.



Legend	
Flooding above floor level	●
Flooding below floor level	▲

*This map indicates locations of confirmed damage due to flooding above floor level and below floor level from 2006 to 2015. It is possible that flood damage also occurred at other locations.

Legend		
	Railway	JR
		Other private railway
	Major main road	National road
		Prefectural road
	River/lake	
	Administrative boundary	
	Evacuation site	
	Pedestrian bridge	
	Underpass	Note: Flooding is possible during torrential rainfall.
	Aid station outside hospital	



Inquiries:
Sewer Maintenance Division, Construction Department,
Matsudo City

TEL 047-366-7361 FAX 047-363-6779
Website: <http://www.city.matsudo.chiba.jp>

Note
This map is based on numerical geographical data acquired in 2014. In some cases it differs partially from current conditions. The map of anticipated flooding was prepared to reflect the status of upkeep of rivers, sewerage facilities, etc., up through March 2016. Depending on the nature of rainfall, flood zones and flooding depths may vary.