

How to separate household garbage

Sort your garbage properly, be sure to follow the rules on the proper location and day of the week for collection, and dispose of items at a collection site by **8:30 a.m.** on the designated collection day.

[Contact] Matsudo City Household Garbage Consultation Call Center



0120-264-057

FAX 047-704-4591

Smartphone app is distributed and available for download from the following QR code. You can also search using “さんあ〜る (three R)”.



Garbage reduction symbol character Kurinkuru-chan

Garbage Collection Holidays

- Sundays
- May 3 to 5
- December 31 to January 3

There may be delay in collection or a collection may be canceled due to weather.

Check the garbage collection day of your community

* Note that the location of the collection site may be different from your local area.

- Check the collection days on the attached table.
- This is divided into 12 sections depending on the location of the collection site.
- Fill in the table below, or cut and paste the attached table.
- If you cannot figure out the collection date for your area, contact the Matsudo City Household Garbage Consultation Call Center.

Types of garbage and day	Disposal Method and major items	Example of subject items and precautions
① Burnable garbage 	① <ul style="list-style-type: none"> In bags authorized by Matsudo City for burnable garbage. (Hazardous garbage bags, black bags and plastic bags from other municipalities are not allowed) Cut the length of boards and ladders to less than 50cm and thickness to less than 10cm and tie with string. (Bags authorized by Matsudo City for burnable garbage are allowed) 	<ul style="list-style-type: none"> Heat transfer papers Photo albums (paper) Sea shells Disposable diapers Thermal papers Packages with silver lining such as a sake packaging Rags Masks Cooking oils (should be saturated in small amounts in paper or cloth, or solidified) Genuine leather products smaller than 50cm Yarn Cat litter Water proofed papers (paper cups, yogurt containers, etc.) <p>[List of retail outlets offering bags authorized by Matsudo City for burnable garbage]</p> <p>* Types and sizes of bags sold vary by store. </p> <p>* Dispose cloth products that cannot be reused (wet or dirty ones) by cutting to 50cm or less.</p>
② Non-burnable garbage 	② <ul style="list-style-type: none"> Spray cans, etc. Dispose the spray after using it completely, without punching a hole. Metal products, etc. Wrap sharp objects in newspaper, etc., place in a plastic bag, and label the package “きりば” (dangerous). Ceramic and glass garbage Wrap in newspaper, etc., place in a plastic bag, and label the package “われもの” (breakable items). Small household appliances less than 50cm (Including tricycles and unicycles) [Excluding battery-assisted bicycles] Affix a label indicating as “ごみ” (garbage). Bicycle Plastic products (30cm or more and less than 50cm) <p>[How to dispose pruned branches, fallen leaves, mown grass]</p> <ul style="list-style-type: none"> Collected on the same day as “ceramic and glass garbage”. Bundle and tie the pruned branches with a string. (Make sure to cut each to length to less than 50cm and thickness to less than 10cm) Dispose the fallen leaves and mown grass that cannot be bundled in a transparent or semitransparent plastic bags, or in bags authorized by Matsudo City for burnable garbage. (Hazardous garbage bags, black bags and plastic bags from other municipalities are not allowed) 	<ul style="list-style-type: none"> Disposable body warmers Flashlights Tools Earthen pots Light bulbs (incandescent bulbs) Cameras Air purifiers Weight scales Microwave ranges and oven ranges Plastic tanks Hose reel main units Kettles <p>* Following items can be disposed at the collection site even if it is 50cm or larger.</p> <ul style="list-style-type: none"> Clothes cases (up to 1 item per collection) Cushions Zabutons (Japanese cushions) Garden stakes Stepladders (metal) Golf clubs Laundry poles <p>Others</p> <ul style="list-style-type: none"> Ironing boards Umbrellas Gas ranges Extension cords Vacuum cleaners Propeller fans Carpets (4.5 tatami mat size or smaller, fold it small and tie with string) Lids for bathtubs (tie with string) <p>* Dispose of the dry batteries inside household appliances and lighters as “hazardous garbage”.</p> <p>* Dispose of small household appliances, bicycles, and plastic products that cannot fit in the bag as is.</p> <p>* Appliances that use CFCs cannot be collected.</p>
③ Hazardous garbage 	③ <ul style="list-style-type: none"> Dispose of in a “Hazardous Garbage Bag” distributed by Matsudo City, or by clearly specifying as “ゆうがい” (hazardous garbage) in a transparent or semitransparent plastic bag. (Black bags or plastic bags from other municipalities cannot be used as bags authorized by Matsudo City for burnable garbage) <p>Hazardous garbage bags are distributed at City Hall, branch offices, civic centers, etc. For details, contact the Household Garbage Consultation Call Center.</p>	<ul style="list-style-type: none"> Dry cell batteries Coin-type batteries (types CR, BR) Products using mercury (mercury thermometer, etc.) Lighters (with contents exhausted) Fluorescent lamps, fluorescent tubes (take measures such as placing them in the cardboard packaging the replacements came in so they will not shatter) Diatomite products (contact manufacturers for collection of products containing asbestos as defined by the Ministry of Health, Labour and Welfare) Small rechargeable batteries and products containing small rechargeable batteries (Mobile batteries, electronic cigarettes, electric shavers, wireless earphones, electric toothbrushes, portable fans, handheld vacuum cleaners, etc.) <p>* If a small rechargeable battery can be removed, please dispose of it in the collection receptacle provided at a cooperating store. Then, dispose of the main unit as “non-burnable garbage”.</p>
④ Recyclable items (1) Paper and cloth (2) Bottles and cans (for food/drink) 	④ <p>Divide according to the item types.</p> <p>(1) Paper and cloth</p> <ul style="list-style-type: none"> Cardboard (please fold) Newspaper Folded inserts Magazines Books Paper packages <p>* After bundling, tie crosswise with string before disposal.</p> <ul style="list-style-type: none"> Miscellaneous papers (boxes of snacks, envelopes, paper cores, etc.) <p>Tie crosswise with string before disposal, or place it in a paper bag, label the bag “ざつがみ” (miscellaneous papers), and tie one way vertically so the contents can be seen before disposal.</p> <p>Clothes</p> <p>Dispose by tying the clothes with string, or dispose by clearly specifying as “ぬのるい” (clothes) in a transparent or semitransparent plastic bag. (Bags authorized by Matsudo City for burnable garbage, hazardous garbage bags, black bags or plastic bags from other municipalities are not allowed)</p> <p>(2) Bottles and cans (for food/drink)</p> <p>Transparent or semitransparent plastic bag</p> <p>* Bags authorized by Matsudo City for burnable garbage, hazardous garbage bags, black bags and plastic bags from other municipalities are not allowed.</p>	<p>Papers</p> <ul style="list-style-type: none"> Soiled or processed items should be disposed of as “burnable garbage”. Do not bundle with anything other than string (adhesive tape, plastic wrap, etc.). Mixing with burnable garbage, ceramic and glass garbage is occurring frequently. Take caution when separating. <p>Clothes</p> <ul style="list-style-type: none"> Clothes Curtains (excluding vinyl curtains) Sheets Blankets <p>* Do not dispose on a rainy day or a day that may rain.</p> <p>Blankets and sheets containing cotton or sponge (including quilting) are bulk garbage.</p> <p>* Cut wet or dirty items to less than 50cm and dispose as “burnable garbage”.</p> <p>Bottles and cans</p> <ul style="list-style-type: none"> Bottles for food and drink Cans for food and drink (aluminum cans and steel cans) Empty bottles of medication <p>* Make sure it is empty and rinse with water before disposal.</p> <p>* Bottles and cans used for anything other than food or drink, including spray cans, should be disposed of as “non-burnable garbage”.</p>
⑤ Recyclable plastic items Plastic containers and wrapping 	⑤ <p>Applies only to items with this certification mark</p> <p>* Bags authorized by Matsudo City for burnable garbage, hazardous garbage bags, black bags and plastic bags from other municipalities are not allowed.</p> <p>* Do not double-up the bags containing garbage.</p> <p>Cups, trays, etc.</p> <p>Plastic bags, plastic wraps, etc.</p> <p>Containers of detergent, shampoo, etc.</p> <p>Bags of snacks, tea, breads, instant foods, etc.</p> <p>Caps and labels of the bottle container, etc.</p>	<ul style="list-style-type: none"> Food package wrapping Bags for snacks, bread, etc. Food trays Packaging for eggs, etc. Containers for takeout bento (lunch boxes) Containers for pudding, jelly, margarine, etc. Containers for seasoning, etc. Polystyrene foam <p>* Make sure it is empty and rinse with water before disposal.</p> <p>* Soiled plastic containers and wrappings that cannot be cleaned must be disposed of as “non-recyclable plastic garbage (other than plastic containers and wrapping)”.</p> <p>Do not put in products containing mobile batteries or small rechargeable batteries such as electronic cigarettes!</p> <p>There were many fire accidents reported at the recycling facilities, and we have received alerts from the facilities.</p> <p>Dispose of products with internal rechargeable batteries as “hazardous garbage”.</p>
⑥ Non-recyclable plastic garbage (other than plastic containers and wrapping) 	⑥ <p>Plastic products less than 30cm</p> <p>* Bags authorized by Matsudo City for burnable garbage, hazardous garbage bags, black bags and plastic bags from other municipalities are not allowed.</p> <p>Writing utensils and everyday items</p> <p>Rubber and synthetic leather items</p> <p>Toys and tapes, etc.</p> <p>Take shoes, bags, and belts that are still usable to the collection box.</p>	<ul style="list-style-type: none"> Pens Sponges Plastic utensils Washbowls Stockings Shoes Wallets Bags CDs Vinyl records Balls Helmets (plastic) Drying agents Joint mats Fishing lines Cassette tapes (wrap each cassette with tape so the tape does not come out) Cold/ice packs <p>* Plastic and rubber products less than 30cm are collected. Do not mix in metal products.</p> <p>* Large items can be disposed of by cutting to less than 30cm.</p> <p>* Utilize the collection box for the shoes, bags, and belts that are still usable. (Details on back side)</p> <p>Do not put in products containing mobile batteries or small rechargeable batteries such as electronic cigarettes!</p> <p>Dispose of products with internal rechargeable batteries as “hazardous garbage”.</p>

⑦ How to Dispose of Bulk Garbage (Collected on an individual basis)

- Items with side length about 50cm or more * There are some exceptions.
- Collection may take a few days depending on the congestion.
- You can carry it to a recycling center. (Details on back side)
- There are many people calling the wrong number. Be sure to dial the correct number when making your call.
- To reduce the amount of garbage, note that some items may be reused or recycled.

(1) Requests

Request by telephone

Bulk Garbage Reception Center
 ☎047-391-0007
 Reception Hours: 8:30 a.m. to 5:00 p.m.
 Closed: Sundays, national holidays, substitute holidays, and from December 29 to January 3

Request online

Requests can be made 24 hrs. a day (except during maintenance)

* In urgent cases, please call to make an appointment.

(2) Purchase “Bulk garbage ticket”

1,000 yen (tax included) per each bulk garbage. Purchase at nearby ticket-handling outlet.

(3) Affix “Handling ticket”

Write your name and the date of collection on the “handling ticket” and affix to the bulk garbage. Tear off the receipt (right-side portion), and keep it for your records until the collection is completed.

(4) Dispose in front of the house on collection day

Single unit house - In front of gate, garage facing a road, etc.
 Apartment building - Close to entrance on the first floor, next to garbage collection site

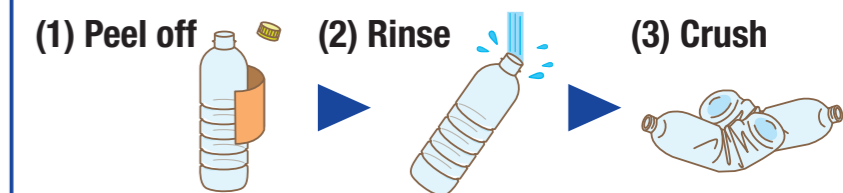
- Collection going inside a home or property is not possible.
- Collection may not be possible in locations that are difficult for collection vehicles to access.
- Dispose the items by 8:30 a.m.

Bulk garbage examples

- Futons, mat pads, bed pads (Up to 3 items are treated as 1 item)
- Sofas (Seating up to 3 people is treated as 1 item)
- Mattresses (any material)
- Beds
- Drawers
- Suitcases
- Wooden furniture
- Battery-assisted bicycles
- Space heaters (oil, kerosene)

⑧ PET bottles

* Cannot be disposed by public collection.



* Dispose of removed caps and labels as recyclable plastic items.

Take it to collection cooperating stores such as supermarkets, or group collection by the neighborhood association, residents' association.

See the back side for cooperating stores such as supermarkets.

Utilize the group collection (recycling activities)

Actively participate in the recycling activities of local community groups (neighborhood association, residents' association, etc.) for paper items, cans, glass bottles and PET bottles.

Please confirm the collection items, dates and locations with each organization.

- Also included under “さんあ〜る (three R)” app.
- Environmental Management Division, Administration Unit ☎047-366-7332



List of PET bottle collect on stores

Matsudo City conducts separate collection of plastic PET bottles with the cooperation of entities such as the supermarkets listed below. Collection boxes for plastic PET bottles are located at cooperating stores. Please observe the rules for disposal.

Handling Location Name	Location	Handling Location Name	Location	Handling Location Name	Location
1 Maruetsu Kitamatsudo Store	2220-1 Kamihongo	11 AEON FOOD STYLE Shinmatsudo Store	3-2-2 Shinmatsudo	21 Ito-Yokado Matsudo Store	1149 Matsudo
2 Lako Mart Kitamatsudo Store	2-6-1 Kitamatsudo	12 Maruetsu Takatsuka Store*1	165-1 Takatsukashinden	22 Summit Store Matsudoshinden Store	245-1 Matsudoshinden
3 Maruetsu Yagiri Ekimae Store*1	19-1 Kuriyama	13 Top Parque Tokiwadaira Ekimae Store	3-1-1 Tokiwadaira	23 Bel'x Matsuhidai Store	193-1 Matsuhidai
4 AEON Kitakogane Store	1 Kogane	14 SEYU Tokiwadaira Store	3-11-1 Tokiwadaira	24 Livre Keisei Miyakodai Store	4-9-1 Miyakodai
5 Livre Keisei Koganehara Store	6-2-13 Koganehara	15 York Price Goko Store	5-22-3 Tokiwadaira	25 Super Courant D'air Shinmatsudo Store	1-14-13 Yokosuka
6 Maruetsu Koganehara Store*1	7-18-3 Koganehara	16 Maruetsu Kamihongo Store	2-57-1 Nakaicho	26 Hallo! Mart Mutsumi Store	4-204-2 Rokkoudai
7 Hataya Shoten	2-6-1 Goko	17 Hallo! Mart Mabashi Store	11-1 Nishimabashiakawacho	27 City Hall (Main Office)	387-5 Nemoto (Main building 1F)
8 Bel'x Goko Store	8-11-1 Goko	18 Daiei Matsudo Nishiguchi Store	4-2 Nemoto	28 Health & Welfare Center (Fureai 22)	3-7-1 Gokonishi
9 Bel'x Kitamatsudo Store	2-73-2 Sakaecho	19 Ito-Yokado Yabashira Store	1-15-8 Higurashi	29 Higamatsu Terrace	2-14-1 Higashimatsudo
10 Maruetsu Sakaecho Store*1	6-384 Sakaecho	20 Maruetsu Makinohara Store*1	2-10 Makinohara		

As of the end of February 2024

● *1 These stores are equipped with automated collection equipment. Discard without crushing. ● There are also shops other than those mentioned above that have PET bottle collection boxes. ● This information is subject to change, so please confirm in advance.

Collection Box (site collection)

Collection Box for Shoes, Bags, and Belts

- Items that can be collected: Leather shoes, sneakers, handbags, belts, etc.
- Items that cannot be collected: Rubber boots, boots, spikes, ransoseru, suitcases, golf bags, etc.; also, items that are soiled, damaged, or smell bad.
- Place shoes in pairs in a transparent plastic bag so that the contents can be seen.
- Please confirm the business hours for each facility where collection boxes are located.



Collection box locations

City Hall (Main Office.), Kogane Branch Office, Athletic Park Maintenance Office, Clean Center Sports Facility, Tobu Sports Park Gymnasium, Wanagaya Sports Center, Koganehara Gymnasium, Tokiwadaira Gymnasium, Shin-Matsudo Civic Center, Mabashi Civic Center, Minoridai Civic Center, Tokiwadaira Civic Center, Kogasaki Civic Center, Nijusseikigaoka Civic Center, Hachigasaki Civic Center, Mutsumi Civic Center, Matsuhidai Civic Center

Small Household Appliances Collection Box

Small household appliances that fit into the opening of the collection box (30cm wide x 15cm high) are collected.

- Notebook computers, tablets, mobile phones, cameras, portable game devices, electronic dictionaries, portable music players
- * Items other than those above can be placed in the collection box as long as they fit into the opening of the collection box.
- * Personal information is your own liability; please be sure to delete all data before disposal.
- * Remove any batteries. (Do not place removed batteries into the collection box)
- Please confirm the business hours for each facility where collection boxes are located.

Collection box locations

City Hall (Main Office.), Kogane Branch Office, Koganehara Branch Office, Mutsumi Branch Office, Mabashi Branch Office, Shinmatsudo Branch Office, Health & Welfare Center (Fureai 22), Comprehensive Welfare Hall, Clean Center Sports Facility, Tobu Sports Park Gymnasium, Wanagaya Sports Center, Minoridai Civic Center, Tokiwadaira Civic Center, Kogasaki Civic Center, Hachigasaki Civic Center, Matsuhidai Civic Center, Goko Civic Center, Akira Civic Center, Koganehara Civic Center, Yabashira Civic Center

Garbage collected with recycling system, etc.

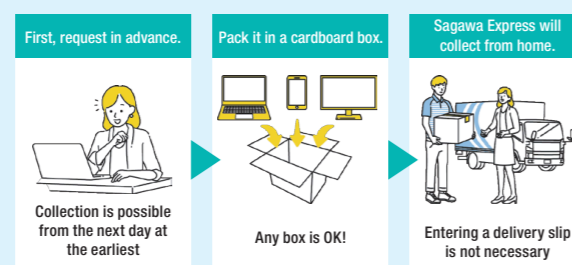
How to dispose of household computers

* Notebook computers can be placed in the small household appliances collection box.

① Collection free of charge using a courier service

ReNet Japan Recycle, a partner/cooperator of Matsudo City, collects by courier service. If a PC main unit is included in the collection items, **collection fee for 1 box will be free of charge**. Accessories such as printers can be collected together (maximum size and weight of a box that can be free of charge has a total length of 3 sides less than 140cm and weighs 20kg or less). There is also a service to delete personal information data. For details on how to apply, refer to the following website.
<https://www.renet.jp/> ☎0570-085-800

Courier service collection process



② Collection by the PC manufacturer

PCs (including the PC monitor) no longer used in the home are collected by the manufacturer and recycled as a resource by the manufacturer based on the "Law for Promotion of Effective Utilization of Resources (Act for promoting effective use of resources)". For details on the contact, collection method, collection/recycling fee, etc., for each manufacturer, refer to the website of PC3R Promotion Association, or contact them.
<https://www.pc3r.jp/> ☎03-5282-7685

Collection of Mobile Phones, PHS and Chargers

- Small household appliances collection box
- ReNet Japan Recycle
- * Only does not accept rechargeable devices.
- Take it to your local mobile phone or PHS shop.
- Items are collected free of charge (regardless of the manufacturer) then recycled.

Collected at shops indicated by this identifying mark.



Collection of small rechargeable batteries and button-type batteries

Small rechargeable batteries and button-type batteries (model code LR, SR, PR) cannot be collected by Matsudo City. Dispose the small rechargeable batteries with a recycling mark into the collection boxes located at local collection cooperating stores (such as appliance stores or home centers), and the button-type batteries into the collection cans at the cooperating stores.

Look for this recycling mark, shown at right, to be displayed on small rechargeable batteries

For details, check the Matsudo City website.

How to dispose and recycle small rechargeable batteries and products containing small rechargeable batteries

How to dispose of items listed in the Household Appliance Recycling Act

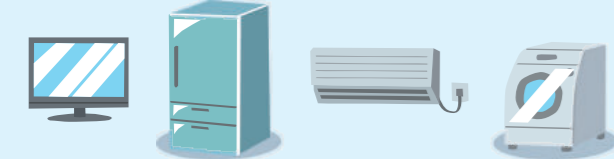
- Washing machines ○ TVs (CRT, LCD, plasma) ○ Air conditioners, exterior units ○ Clothes dryers (electrical, gas)
- Refrigerators (including wine cellars, cooling boxes, hot/cold refrigerator) ○ Freezer

Disposal method

Advance purchase of a recycling ticket at a post office is required.

Inquiries about recycling tickets:
 Household Appliance Recycling Ticket Center

Reception Hours: 9 a.m. to 6 p.m.
 (closed on Sundays and holidays)
 ☎0120-319-640 or for some IP phones
 ☎03-5249-3455 (fee charged)



Method 1: Ask a retail outlet

If the product was purchased, or purchased for replacement at a specific retail outlet
 * Collection and transportation fee is required in addition to the purchase of a recycling ticket.

Method 2: Take your used item to a location for collection designated by the manufacturer

- Contact the following specified collection location in advance. * You must purchase recycling tickets.
- MD Logis Field Service Co., Ltd., Ichikawa Office 3-12 Shiohama, Ichikawa-shi ☎047-395-2549
 - Shinkashiwasoko Co., Ltd. Kashiwa Office 164 Toyofuta, Kashiwa-shi ☎04-7128-5001
 - Funabashi Office, Maruzen Keiyo Butsuryu Co., Ltd. 19-4 Shiomicho, Funabashi-shi ☎047-431-4880
 - Shin-Misato DC, Shinko Logistics Co., Ltd. 194 Nizo, Misato-shi, Saitama Prefecture ☎048-954-7586

Method 3: Ask a Matsudo City general waste collection company to collect your item

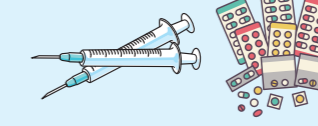
Please contact the office below for information on companies that handle general waste collection.
 * You must purchase recycling tickets and pay collection and transportation fees.
 [Introduction of general waste collection companies, etc.]
 Matsudo City General Waste Collection Services Cooperative Union Office (Address: 2060 Matsudo, Matsudo-City)
 ☎0120-535-309 (please note that mobile phone users cannot call this toll-free number) or ☎047-312-2275

Garbage the City Does Not Handle

How to Dispose of Home Medical Waste

Waste generated during home medical care includes sharp objects such as injection needles, so these items **cannot be disposed of at the collection site**. To protect city residents and the collection staff from accidents, please consult your family doctor or your local pharmacy about the disposal of these items.
 [Items that can be collected at shops, etc.]

- Insulin injection devices with needles, blood transfusion lines, and other tubing with needles, etc.
- Medical items purchased at a pharmacy or drugstore that have expired and are no longer needed
- Prescription medicine you have received at a pharmacy after being examined at a medical institution that you no longer need. (This includes medicine that is taken internally or applied externally.)



* Dispose of peritoneal dialysis nutrient bags and tubes without needles (less than 30 cm), as well as syringes without needles, etc. as "non-recyclable plastic garbage (other than plastic containers and wrapping)"

Items difficult to process

Examples

- Automotive parts (tires, batteries, etc.) ○ Waste oil
- Paint ○ Pianos ○ Tatami mats
- Agricultural chemicals and drugs
- Heat-resistant safes ○ Fire extinguishers
- Propane gas cylinders
- Plaster boards ○ Soil ○ Compost
- Construction and demolition wastes, etc.
- Products containing CFCs, etc.

Either contact the retail outlet or dealer, or ask a specialized company to collect these.



Garbage the City Does Not Collect

- One-time large amounts of garbage (moving, major housecleaning, pruning of trees, etc.)
- Garbage from offices, shops, town associations, etc.
- Garbage generated at events (local festivals, various classes, etc.)

You can either bring items to the municipal garbage processing facility yourself, following the rules for sorting and bringing items, or ask a general waste collection company to collect them.

Take the papers, clothes, bottles, and cans to a commercial garbage processing facility. (Refer to following "Garbage Processing Facilities".)

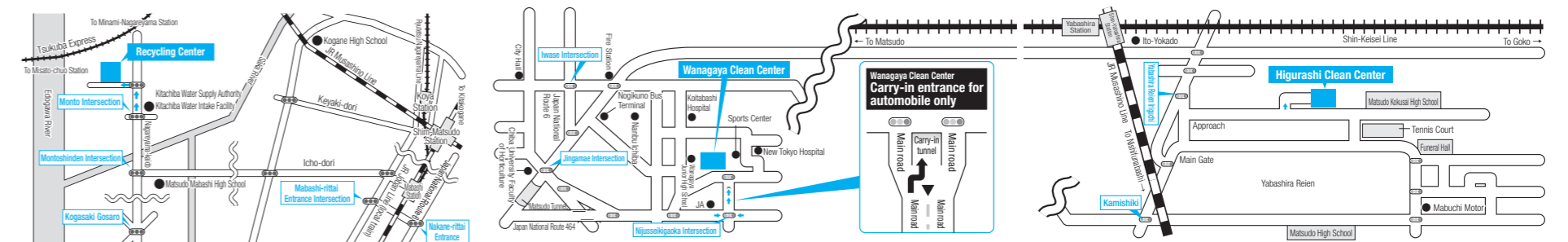
[Introduction of general waste collection companies, etc.]

Matsudo City General Waste Collection Services Cooperative Union Office (Address: 2060 Matsudo)

☎0120-535-309 (please note that mobile phone users cannot call this toll-free number.) or ☎047-312-2275

Garbage Processing Facilities

Type of garbage	Facility to Carry In	Handling Fee (As of April 1, 2024)	Carry-in time
Bulk garbage Non-burnable garbage, hazardous garbage	Recycling Center	17.6 yen per 1kg (16 yen + tax)	Monday to Saturday 8:30 a.m. to 4:30 p.m. Closed on Sundays, May 3 to 5, and December 31 to January 3
Burnable garbage Non-recyclable plastic garbage (other than plastic containers and wrapping)	Wanagaya Clean Center	* Items less than 20kg are regarded as 20kg and charged 352 yen	
Recyclable plastic items Pruned branches, fallen leaves, mown grass <small>(Cut each pruned branch down to less than 50cm in length, and less than 10cm in diameter/thickness)</small>	Higurashi Clean Center	(320 yen + tax)	



Recycling Center

Carry-in dedicated site
 (Open 24 hours)

316-4 Shichiuemonshinden

Carry-in dedicated phone
 ☎047-707-2746

Wanagaya Clean Center

1349-2 Wanagaya
 ☎047-392-1118

Higurashi Clean Center

5-14-1 Gokonishi
 ☎047-388-6555

- A reservation in advance is required to carry in garbage.
- Bring an official form of personal ID or document to confirm your address (driver's license, my number card, etc.).
- Unload the item yourself according to the staff's directions. Carry-in is restricted to 1 facility and once per day per person. (There is a restriction of amount you can carry in.)
- Please confirm the criteria for carrying in garbage when you make your reservation.

Where to take the "recyclable items (paper, cloth, bottles, cans)" are listed as follows.

* Some restrictions may be imposed on items permitted to be brought in. Be sure call in advance to confirm.

Where to Take Paper and Cloth Items

- Kinoshita Corporation 5-15-4 Minoridai ☎047-308-8661
- Green Co., Ltd. 879 Kamishiki ☎047-391-1588
- Saito Eiji Co., Ltd. 954-7 Wanagaya ☎04-7186-6701 (Main Office)
- Yamamuro Co., Ltd. 727 Kamihongo ☎047-362-5170
- Resource Gaia Co., Ltd. 6-10-14 Minoridai ☎047-360-5181



Where to Take Bottles and Cans

- Isaka Enterprise Co., Ltd. 86 Kamihongo ☎047-331-7100
- Resource Gaia Co., Ltd. 6-10-14 Minoridai ☎047-360-5181



Others

Subsidies for Kitchen Scrap Disposals

Matsudo City offers subsidies for the purchase of kitchen scrap disposals (compost boxes and effective-microorganism sealed containers) and electric kitchen scrap disposals.

For details of application method and application form, browse the Matsudo City website from following QR code, or contact the Environmental Management Division.

Environmental Management Division,
 Administration Unit
 ☎047-366-7332



Matsudo City website

[2024 Version]

District allocation table

This is based on the address of the collection site. Be careful.

Check the garbage collection day of your community!

Collection of the recyclable items will alternate, so check if your

collection is Group A or B.

Affix onto the “How to separate/dispose household garbage” table.

A - Mon	A - Tue	A - Wed	A - Thu	A - Fri	A - Sat																																																																																																																																																																																																																																										
<p>1344 to 1481, 3372 to 4670 Kamihongo 6-13 Koganeharadanchi Takegahana (excluding 1 to 15) 5 Hachigasaki Part of 6 Hachigasaki (5 to 8) 7 Hachigasaki 3 to 8 Higurashi (excluding 8-41-1 Higurashi) Matsudoshinden (excluding south vicinity of Shinkeisei Line [1, 3, 15, 17 to 19, 66, 94, 109, 115], 1-4, Hakusan Green Space) Minamihanashima, Minamihanashimanakamachi (excluding 255) 1 to 4 Minamihanashima Minoridai, 5 to 8 Minoridai</p>	<p>1 to 924, 2089 to 3333 Kamihongo 1 to 3 Kitamatsudo Kubohiraga 16-8, 27-3, 239 to 241 Kogane Koganekiyoshigaoka 1 to 5 6-9 Koganeharadanchi 1 to 3 Nakaicho Negiuchi Part of 8 Higurashi (41-1) Matsudoshinden (north of Shinkeisei Line) Part of Minamihanashimanakamachi (255) 1 to 4 Minoridai</p>	<p>1 to 4 Kogasaki, part of Kogasaki (984, 987, 990-1, 991-4) 1 to 228, 231, 237, 242 to 458 Kogane Koganekazusacho (excluding 10 [monthly parking]) 7-1 Koganeharadanchi 1 to 5 Sakaetonishi 1 to 2 Shinmatsudo Part of 7 Shinmatsudo (394, 395, 422-1, 489 to 567) 1 to 2 Shinmatsudokita Part of Tonohiraga (200 to 202) Nakawakura (excluding 134, 145-34 to 44, 146-6) Nishimabashiakawacho, Nishimabashikuramotocho, Nishimabashisaicho, Nishimabashirotecho Part of 3 Nishimabashi (8-10) 1 to 2 Yokosuka</p>	<p>42, 88 to 423 Kanegasaku 1 to 4 Koganehara 3-18 Koganeharadanchi Sendabori 1 to 4 Tokiwadaira (excluding Tokiwadairadanchi Section E) Tokiwadairadanchi Section 1 Tokiwadairadanchi Section 3 1 to 2 Makinohara</p>	<p>Iwase (excluding northern vicinity of Asahigaokadai 3 Park) 14 to 41, 43, 51 to 64 Kanegasaku Part of Kouya (4 to 12, 21, 1507-19) Kogane 451-12 Part of Koganekazusacho (10 [monthly parking]) 1 to 3 Koganekiyoshocho, Tokiwadairajinyamae, Tokiwadairanishikubocho, Tokiwadairafutabacho, Tokiwadairayanagicho, Tokiwadairadanchi Section E Higurashi, Futatsugi, Futatsugifutabacho Matsudo (excluding part of eastern vicinity of Joban Line, 1650, 1655) 1 Nishimabashi 1 to 1844, 1874 to 1879, 2413 to 2418, 2489, 2518 to 2741, 3090 to 3395 Mabashi Konemoto, Yoshiicho</p>	<p>1 to 4 Asahicho Kogane (1100s, 1200s, 1300s) Shichiuemonshinden, Montoshinden 1 to 3 Shinmatsudomiami 3 to 7 Shinmatsudo (excluding 7-394, 395, 422-1, 489 to 567) Nakanenagatsucho 2 to 5 Nishimabashi (excluding 3-8-10 Nishimabashi) Matsudo (west of Joban Line) Matsudo (part of area east of Joban Line) 574, 579, 714, 1108, 1368, 1370, 1378, 1405, 1439, 1485, 1495, 1565 to 1568, 1584, 1591, 1595 to 1598, 1605, 1638, 1645, 1649</p>																																																																																																																																																																																																																																										
① Burnable garbage Tue/Thu/Sat	① Burnable garbage Mon/Wed/Fri	① Burnable garbage Tue/Thu/Sat	① Burnable garbage Mon/Wed/Fri	① Burnable garbage Tue/Thu/Sat	① Burnable garbage Mon/Wed/Fri																																																																																																																																																																																																																																										
Mon	Tue	Wed	Thu	Fri	Sat																																																																																																																																																																																																																																										
<p>② Non-burnable garbage ③ Hazardous garbage ④ Recyclable items (1) Paper and cloth (2) Bottles and cans (for food/drink)</p> <p>(1) and (2) are collected alternately. Confirm with following calendar.</p> <table border="1"> <thead> <tr> <th>Month</th> <th>Paper and cloth</th> <th>Bottles and cans</th> </tr> </thead> <tbody> <tr><td>April 2024</td><td>1, 15, 29</td><td>8, 22</td></tr> <tr><td>May</td><td>13, 27</td><td>6, 20</td></tr> <tr><td>June</td><td>10, 24</td><td>3, 17</td></tr> <tr><td>July</td><td>8, 22</td><td>1, 15, 29</td></tr> <tr><td>August</td><td>5, 19</td><td>12, 26</td></tr> <tr><td>September</td><td>2, 16, 30</td><td>9, 23</td></tr> <tr><td>October</td><td>14, 28</td><td>7, 21</td></tr> <tr><td>November</td><td>11, 25</td><td>4, 18</td></tr> <tr><td>December</td><td>9, 23</td><td>2, 16, 30</td></tr> <tr><td>January 2025</td><td>6, 20</td><td>13, 27</td></tr> <tr><td>February</td><td>3, 17</td><td>10, 24</td></tr> <tr><td>March</td><td>3, 17, 31</td><td>10, 24</td></tr> </tbody> </table>	Month	Paper and cloth	Bottles and cans	April 2024	1, 15, 29	8, 22	May	13, 27	6, 20	June	10, 24	3, 17	July	8, 22	1, 15, 29	August	5, 19	12, 26	September	2, 16, 30	9, 23	October	14, 28	7, 21	November	11, 25	4, 18	December	9, 23	2, 16, 30	January 2025	6, 20	13, 27	February	3, 17	10, 24	March	3, 17, 31	10, 24	<p>② Non-burnable garbage ③ Hazardous garbage ④ Recyclable items (1) Paper and cloth (2) Bottles and cans (for food/drink)</p> <p>(1) and (2) are collected alternately. Confirm with following calendar.</p> <table border="1"> <thead> <tr> <th>Month</th> <th>Paper and cloth</th> <th>Bottles and cans</th> </tr> </thead> <tbody> <tr><td>April 2024</td><td>2, 16, 30</td><td>9, 23</td></tr> <tr><td>May</td><td>14, 28</td><td>7, 21</td></tr> <tr><td>June</td><td>11, 25</td><td>4, 18</td></tr> <tr><td>July</td><td>9, 23</td><td>2, 16, 30</td></tr> <tr><td>August</td><td>6, 20</td><td>13, 27</td></tr> <tr><td>September</td><td>3, 17</td><td>10, 24</td></tr> <tr><td>October</td><td>1, 15, 29</td><td>8, 22</td></tr> <tr><td>November</td><td>12, 26</td><td>5, 19</td></tr> <tr><td>December</td><td>10, 24</td><td>3, 17</td></tr> <tr><td>January 2025</td><td>14, 28</td><td>7, 21</td></tr> <tr><td>February</td><td>11, 25</td><td>4, 18</td></tr> <tr><td>March</td><td>11, 25</td><td>4, 18</td></tr> </tbody> </table>	Month	Paper and cloth	Bottles and cans	April 2024	2, 16, 30	9, 23	May	14, 28	7, 21	June	11, 25	4, 18	July	9, 23	2, 16, 30	August	6, 20	13, 27	September	3, 17	10, 24	October	1, 15, 29	8, 22	November	12, 26	5, 19	December	10, 24	3, 17	January 2025	14, 28	7, 21	February	11, 25	4, 18	March	11, 25	4, 18	<p>② Non-burnable garbage ③ Hazardous garbage ④ Recyclable items (1) Paper and cloth (2) Bottles and cans (for food/drink)</p> <p>(1) and (2) are collected alternately. Confirm with following calendar.</p> <table border="1"> <thead> <tr> <th>Month</th> <th>Paper and cloth</th> <th>Bottles and cans</th> </tr> </thead> <tbody> <tr><td>April 2024</td><td>10, 24</td><td>3, 17</td></tr> <tr><td>May</td><td>8, 22</td><td>1, 15, 29</td></tr> <tr><td>June</td><td>5, 19</td><td>12, 26</td></tr> <tr><td>July</td><td>3, 17, 31</td><td>10, 24</td></tr> <tr><td>August</td><td>14, 28</td><td>7, 21</td></tr> <tr><td>September</td><td>11, 25</td><td>4, 18</td></tr> <tr><td>October</td><td>9, 23</td><td>2, 16, 30</td></tr> <tr><td>November</td><td>6, 20</td><td>13, 27</td></tr> <tr><td>December</td><td>4, 18</td><td>11, 25</td></tr> <tr><td>January 2025</td><td>8, 22</td><td>15, 29</td></tr> <tr><td>February</td><td>5, 19</td><td>12, 26</td></tr> <tr><td>March</td><td>5, 19</td><td>12, 26</td></tr> </tbody> </table>	Month	Paper and cloth	Bottles and cans	April 2024	10, 24	3, 17	May	8, 22	1, 15, 29	June	5, 19	12, 26	July	3, 17, 31	10, 24	August	14, 28	7, 21	September	11, 25	4, 18	October	9, 23	2, 16, 30	November	6, 20	13, 27	December	4, 18	11, 25	January 2025	8, 22	15, 29	February	5, 19	12, 26	March	5, 19	12, 26	<p>② Non-burnable garbage ③ Hazardous garbage ④ Recyclable items (1) Paper and cloth (2) Bottles and cans (for food/drink)</p> <p>(1) and (2) are collected alternately. Confirm with following calendar.</p> <table border="1"> <thead> <tr> <th>Month</th> <th>Paper and cloth</th> <th>Bottles and cans</th> </tr> </thead> <tbody> <tr><td>April 2024</td><td>4, 18</td><td>11, 25</td></tr> <tr><td>May</td><td>2, 16, 30</td><td>9, 23</td></tr> <tr><td>June</td><td>13, 27</td><td>6, 20</td></tr> <tr><td>July</td><td>11, 25</td><td>4, 18</td></tr> <tr><td>August</td><td>8, 22</td><td>1, 15, 29</td></tr> <tr><td>September</td><td>5, 19</td><td>12, 26</td></tr> <tr><td>October</td><td>3, 17, 31</td><td>10, 24</td></tr> <tr><td>November</td><td>14, 28</td><td>7, 21</td></tr> <tr><td>December</td><td>12, 26</td><td>5, 19</td></tr> <tr><td>January 2025</td><td>16, 30</td><td>9, 23</td></tr> <tr><td>February</td><td>13, 27</td><td>6, 20</td></tr> <tr><td>March</td><td>13, 27</td><td>6, 20</td></tr> </tbody> </table>	Month	Paper and cloth	Bottles and cans	April 2024	4, 18	11, 25	May	2, 16, 30	9, 23	June	13, 27	6, 20	July	11, 25	4, 18	August	8, 22	1, 15, 29	September	5, 19	12, 26	October	3, 17, 31	10, 24	November	14, 28	7, 21	December	12, 26	5, 19	January 2025	16, 30	9, 23	February	13, 27	6, 20	March	13, 27	6, 20	<p>② Non-burnable garbage ③ Hazardous garbage ④ Recyclable items (1) Paper and cloth (2) Bottles and cans (for food/drink)</p> <p>(1) and (2) are collected alternately. Confirm with following calendar.</p> <table border="1"> <thead> <tr> <th>Month</th> <th>Paper and cloth</th> <th>Bottles and cans</th> </tr> </thead> <tbody> <tr><td>April 2024</td><td>5, 19</td><td>12, 26</td></tr> <tr><td>May</td><td>10, 24</td><td>17, 31</td></tr> <tr><td>June</td><td>7, 21</td><td>14, 28</td></tr> <tr><td>July</td><td>5, 19</td><td>12, 26</td></tr> <tr><td>August</td><td>2, 16, 30</td><td>9, 23</td></tr> <tr><td>September</td><td>13, 27</td><td>6, 20</td></tr> <tr><td>October</td><td>11, 25</td><td>4, 18</td></tr> <tr><td>November</td><td>8, 22</td><td>1, 15, 29</td></tr> <tr><td>December</td><td>6, 20</td><td>13, 27</td></tr> <tr><td>January 2025</td><td>10, 24</td><td>17, 31</td></tr> <tr><td>February</td><td>7, 21</td><td>14, 28</td></tr> <tr><td>March</td><td>7, 21</td><td>14, 28</td></tr> </tbody> </table>	Month	Paper and cloth	Bottles and cans	April 2024	5, 19	12, 26	May	10, 24	17, 31	June	7, 21	14, 28	July	5, 19	12, 26	August	2, 16, 30	9, 23	September	13, 27	6, 20	October	11, 25	4, 18	November	8, 22	1, 15, 29	December	6, 20	13, 27	January 2025	10, 24	17, 31	February	7, 21	14, 28	March	7, 21	14, 28	<p>② Non-burnable garbage ③ Hazardous garbage ④ Recyclable items (1) Paper and cloth (2) Bottles and cans (for food/drink)</p> <p>(1) and (2) are collected alternately. Confirm with following calendar.</p> <table border="1"> <thead> <tr> <th>Month</th> <th>Paper and cloth</th> <th>Bottles and cans</th> </tr> </thead> <tbody> <tr><td>April 2024</td><td>13, 27</td><td>6, 20</td></tr> <tr><td>May</td><td>18</td><td>11, 25</td></tr> <tr><td>June</td><td>1, 15, 29</td><td>8, 22</td></tr> <tr><td>July</td><td>13, 27</td><td>6, 20</td></tr> <tr><td>August</td><td>10, 24</td><td>3, 17, 31</td></tr> <tr><td>September</td><td>7, 21</td><td>14, 28</td></tr> <tr><td>October</td><td>5, 19</td><td>12, 26</td></tr> <tr><td>November</td><td>2, 16, 30</td><td>9, 23</td></tr> <tr><td>December</td><td>14, 28</td><td>7, 21</td></tr> <tr><td>January 2025</td><td>11, 25</td><td>4, 18</td></tr> <tr><td>February</td><td>8, 22</td><td>1, 15</td></tr> <tr><td>March</td><td>8, 22</td><td>1, 15, 29</td></tr> </tbody> </table>	Month	Paper and cloth	Bottles and cans	April 2024	13, 27	6, 20	May	18	11, 25	June	1, 15, 29	8, 22	July	13, 27	6, 20	August	10, 24	3, 17, 31	September	7, 21	14, 28	October	5, 19	12, 26	November	2, 16, 30	9, 23	December	14, 28	7, 21	January 2025	11, 25	4, 18	February	8, 22	1, 15	March	8, 22	1, 15, 29
Month	Paper and cloth	Bottles and cans																																																																																																																																																																																																																																													
April 2024	1, 15, 29	8, 22																																																																																																																																																																																																																																													
May	13, 27	6, 20																																																																																																																																																																																																																																													
June	10, 24	3, 17																																																																																																																																																																																																																																													
July	8, 22	1, 15, 29																																																																																																																																																																																																																																													
August	5, 19	12, 26																																																																																																																																																																																																																																													
September	2, 16, 30	9, 23																																																																																																																																																																																																																																													
October	14, 28	7, 21																																																																																																																																																																																																																																													
November	11, 25	4, 18																																																																																																																																																																																																																																													
December	9, 23	2, 16, 30																																																																																																																																																																																																																																													
January 2025	6, 20	13, 27																																																																																																																																																																																																																																													
February	3, 17	10, 24																																																																																																																																																																																																																																													
March	3, 17, 31	10, 24																																																																																																																																																																																																																																													
Month	Paper and cloth	Bottles and cans																																																																																																																																																																																																																																													
April 2024	2, 16, 30	9, 23																																																																																																																																																																																																																																													
May	14, 28	7, 21																																																																																																																																																																																																																																													
June	11, 25	4, 18																																																																																																																																																																																																																																													
July	9, 23	2, 16, 30																																																																																																																																																																																																																																													
August	6, 20	13, 27																																																																																																																																																																																																																																													
September	3, 17	10, 24																																																																																																																																																																																																																																													
October	1, 15, 29	8, 22																																																																																																																																																																																																																																													
November	12, 26	5, 19																																																																																																																																																																																																																																													
December	10, 24	3, 17																																																																																																																																																																																																																																													
January 2025	14, 28	7, 21																																																																																																																																																																																																																																													
February	11, 25	4, 18																																																																																																																																																																																																																																													
March	11, 25	4, 18																																																																																																																																																																																																																																													
Month	Paper and cloth	Bottles and cans																																																																																																																																																																																																																																													
April 2024	10, 24	3, 17																																																																																																																																																																																																																																													
May	8, 22	1, 15, 29																																																																																																																																																																																																																																													
June	5, 19	12, 26																																																																																																																																																																																																																																													
July	3, 17, 31	10, 24																																																																																																																																																																																																																																													
August	14, 28	7, 21																																																																																																																																																																																																																																													
September	11, 25	4, 18																																																																																																																																																																																																																																													
October	9, 23	2, 16, 30																																																																																																																																																																																																																																													
November	6, 20	13, 27																																																																																																																																																																																																																																													
December	4, 18	11, 25																																																																																																																																																																																																																																													
January 2025	8, 22	15, 29																																																																																																																																																																																																																																													
February	5, 19	12, 26																																																																																																																																																																																																																																													
March	5, 19	12, 26																																																																																																																																																																																																																																													
Month	Paper and cloth	Bottles and cans																																																																																																																																																																																																																																													
April 2024	4, 18	11, 25																																																																																																																																																																																																																																													
May	2, 16, 30	9, 23																																																																																																																																																																																																																																													
June	13, 27	6, 20																																																																																																																																																																																																																																													
July	11, 25	4, 18																																																																																																																																																																																																																																													
August	8, 22	1, 15, 29																																																																																																																																																																																																																																													
September	5, 19	12, 26																																																																																																																																																																																																																																													
October	3, 17, 31	10, 24																																																																																																																																																																																																																																													
November	14, 28	7, 21																																																																																																																																																																																																																																													
December	12, 26	5, 19																																																																																																																																																																																																																																													
January 2025	16, 30	9, 23																																																																																																																																																																																																																																													
February	13, 27	6, 20																																																																																																																																																																																																																																													
March	13, 27	6, 20																																																																																																																																																																																																																																													
Month	Paper and cloth	Bottles and cans																																																																																																																																																																																																																																													
April 2024	5, 19	12, 26																																																																																																																																																																																																																																													
May	10, 24	17, 31																																																																																																																																																																																																																																													
June	7, 21	14, 28																																																																																																																																																																																																																																													
July	5, 19	12, 26																																																																																																																																																																																																																																													
August	2, 16, 30	9, 23																																																																																																																																																																																																																																													
September	13, 27	6, 20																																																																																																																																																																																																																																													
October	11, 25	4, 18																																																																																																																																																																																																																																													
November	8, 22	1, 15, 29																																																																																																																																																																																																																																													
December	6, 20	13, 27																																																																																																																																																																																																																																													
January 2025	10, 24	17, 31																																																																																																																																																																																																																																													
February	7, 21	14, 28																																																																																																																																																																																																																																													
March	7, 21	14, 28																																																																																																																																																																																																																																													
Month	Paper and cloth	Bottles and cans																																																																																																																																																																																																																																													
April 2024	13, 27	6, 20																																																																																																																																																																																																																																													
May	18	11, 25																																																																																																																																																																																																																																													
June	1, 15, 29	8, 22																																																																																																																																																																																																																																													
July	13, 27	6, 20																																																																																																																																																																																																																																													
August	10, 24	3, 17, 31																																																																																																																																																																																																																																													
September	7, 21	14, 28																																																																																																																																																																																																																																													
October	5, 19	12, 26																																																																																																																																																																																																																																													
November	2, 16, 30	9, 23																																																																																																																																																																																																																																													
December	14, 28	7, 21																																																																																																																																																																																																																																													
January 2025	11, 25	4, 18																																																																																																																																																																																																																																													
February	8, 22	1, 15																																																																																																																																																																																																																																													
March	8, 22	1, 15, 29																																																																																																																																																																																																																																													
⑤ Recyclable plastic items Plastic containers and wrapping Wed	⑤ Recyclable plastic items Plastic containers and wrapping Thu	⑤ Recyclable plastic items Plastic containers and wrapping Fri	⑤ Recyclable plastic items Plastic containers and wrapping Sat	⑤ Recyclable plastic items Plastic containers and wrapping Mon	⑤ Recyclable plastic items Plastic containers and wrapping Tue																																																																																																																																																																																																																																										
⑥ Non-recyclable plastic garbage (other than plastic containers and wrapping) Fri	⑥ Non-recyclable plastic garbage (other than plastic containers and wrapping) Sat	⑥ Non-recyclable plastic garbage (other than plastic containers and wrapping) Mon	⑥ Non-recyclable plastic garbage (other than plastic containers and wrapping) Tue	⑥ Non-recyclable plastic garbage (other than plastic containers and wrapping) Wed	⑥ Non-recyclable plastic garbage (other than plastic containers and wrapping) Thu																																																																																																																																																																																																																																										

[2024 Version]

District allocation table

This is based on the address of the collection site. Be careful.

Check the garbage collection day of your community!

Collection of the recyclable items will alternate, so check if your

collection is Group A or B.

Affix onto the “How to separate/dispose household garbage” table.

B - Mon	B - Tue	B - Wed	B - Thu	B - Fri	B - Sat																																																																																																																																																																																																																																										
<p>1 Goko Part of 2 Goko (1-3 Goko [front of Yoko parking lot]) 6 to 8 Goko 1 to 6 Gokomishi Takayanagishinden 5 to 7 Tokiwadaira (excluding Tokiwadairadanchi Section 2) 1 to 2 Higurashi 6 to 7 Mutsumi 1 to 9 Rokkodai Rokkodainishi</p>	<p>Kushizakishinden, Kushizakiminamicho 2 to 5 Goko (excluding 2-1-3 Goko [front of Yoko parking lot]) 1 to 3 Gokominami, Gokomutsumi Part of Nakawakura (134 [north of Nakawakura Park]) 1 to 4 Hachigasaki 6 Hachigasaki (excluding 5 to 8) 8 Hachigasaki Hachigasakimidoricho Makinohara (no block number) Matsuhidai 1 to 5 Mutsumi</p>	<p>1 to 5 Ooganedaira Ooyaguchi 239 Kanegasaku Kurigasawa, Kuriyama 1 to 5 Koude, 1709 Kogane 5 to 9 Koganehara (excluding Koganeharadanchi [6-7], [6-9], [6-13], [7-1]) 1 to 199 Korokudai, 5 to 8 Sakaecho Tokiwadairadanchi Section 2, 1 to 5 Nakakanasugi Part of Nijusseikigaokakakinokicho 100-107 Hachigasaki, 1, 3, 15, 17 to 19 Matsudoshinden 1 to 2 Midorigaoka, 3, 5 Miyakodai</p>	<p>Part of Iwase (northern vicinity of Asahigaokadai 3 Park), Iwaseubanchi Kogasaki (excluding 984, 987, 990-1, 991-4) 200 to 365 Korokudai Part of Takegahana (1 to 15), Takegahananishimachi Tonohiraga (excluding 200 to 202) Nemoto 1 to 4 Sakaecho Nogikuno Higashihiraga, Hiraga Hinokuchi 66, 94, 109, 115 Matsudoshinden Minamihanashimamukaimachi 1 to 2, 4 Miyakodai</p>	<p>Akiyama, 1 to 3 Akiyama Oohashi, Kamishiki, 1 to 3 Kamishiki 1 to 971 Kamiyakiri 32 to 141, 153 to 178, 184, 185, 190 to 211, 251 to 302, 495 to 507, 509 to 709, 715 to 717, 722 Koyama Shimoyakiri (excluding 18 to 26, 29, 30-1 to 5, 31, 32-10 to 14) Takatsukashinden, Takatsukadanchi, Rikodaidanchi Nijusseikigaokakakinokicho (excluding 100 to 107) Nijusseikigaokatoyamacho, Nijusseikigaokanakamatsucho Nijusseikigaokanashimotocho, Nijusseikigaokahagicho Nijusseikigaokamaruyamacho, Nijusseikigaokaminoricho 1 to 4 Higashimatsudo Matsudo (part of east of Joban Line) 1650, 1655</p>	<p>Kawarazuka, 991 to 1000s Kamiyakiri Kouya (excluding 4 to 12, 21, 1507-19) 6-7 Koganeharadanchi 1 to 31, 148, 183, 187 to 189, 212 to 249, 310 to 491, 711, 718 to 721, 739 to 826 Koyama Part of Shimoyakiri (18 to 26, 29, 30-1 to 5, 31, 32-10 to 14) Shinzaku, Shinmatsudohigashi Tanakashinden, Nakane, Nakayakiri Honcho, Part of Nakawakura (145-34 to 44, 146-6) 1846 to 1871, 1880 to 2029, 2203 to 2303, 2409, 2410, 2418, 2422 to 2437, 2485 to 2487, 2491, 2497 to 2515, 2780 to 3085 Mabashi Mikoze, Wanagaya</p>																																																																																																																																																																																																																																										
① Burnable garbage Tue/Thu/Sat	① Burnable garbage Mon/Wed/Fri	① Burnable garbage Tue/Thu/Sat	① Burnable garbage Mon/Wed/Fri	① Burnable garbage Tue/Thu/Sat	① Burnable garbage Mon/Wed/Fri																																																																																																																																																																																																																																										
Mon	Tue	Wed	Thu	Fri	Sat																																																																																																																																																																																																																																										
<p>② Non-burnable garbage ③ Hazardous garbage ④ Recyclable items (1) Paper and cloth (2) Bottles and cans (for food/drink)</p> <p>(1) and (2) are collected alternately. Confirm with following calendar.</p> <table border="1"> <thead> <tr> <th>Month</th> <th>Paper and cloth</th> <th>Bottles and cans</th> </tr> </thead> <tbody> <tr><td>April 2024</td><td>8, 22</td><td>1, 15, 29</td></tr> <tr><td>May</td><td>6, 20</td><td>13, 27</td></tr> <tr><td>June</td><td>3, 17</td><td>10, 24</td></tr> <tr><td>July</td><td>1, 15, 29</td><td>8, 22</td></tr> <tr><td>August</td><td>12, 26</td><td>5, 19</td></tr> <tr><td>September</td><td>9, 23</td><td>2, 16, 30</td></tr> <tr><td>October</td><td>7, 21</td><td>14, 28</td></tr> <tr><td>November</td><td>4, 18</td><td>11, 25</td></tr> <tr><td>December</td><td>2, 16, 30</td><td>9, 23</td></tr> <tr><td>January 2025</td><td>13, 27</td><td>6, 20</td></tr> <tr><td>February</td><td>10, 24</td><td>3, 17</td></tr> <tr><td>March</td><td>10, 24</td><td>3, 17, 31</td></tr> </tbody> </table>	Month	Paper and cloth	Bottles and cans	April 2024	8, 22	1, 15, 29	May	6, 20	13, 27	June	3, 17	10, 24	July	1, 15, 29	8, 22	August	12, 26	5, 19	September	9, 23	2, 16, 30	October	7, 21	14, 28	November	4, 18	11, 25	December	2, 16, 30	9, 23	January 2025	13, 27	6, 20	February	10, 24	3, 17	March	10, 24	3, 17, 31	<p>② Non-burnable garbage ③ Hazardous garbage ④ Recyclable items (1) Paper and cloth (2) Bottles and cans (for food/drink)</p> <p>(1) and (2) are collected alternately. Confirm with following calendar.</p> <table border="1"> <thead> <tr> <th>Month</th> <th>Paper and cloth</th> <th>Bottles and cans</th> </tr> </thead> <tbody> <tr><td>April 2024</td><td>9, 23</td><td>2, 16, 30</td></tr> <tr><td>May</td><td>7, 21</td><td>14, 28</td></tr> <tr><td>June</td><td>4, 18</td><td>11, 25</td></tr> <tr><td>July</td><td>2, 16, 30</td><td>9, 23</td></tr> <tr><td>August</td><td>13, 27</td><td>6, 20</td></tr> <tr><td>September</td><td>10, 24</td><td>3, 17</td></tr> <tr><td>October</td><td>8, 22</td><td>1, 15, 29</td></tr> <tr><td>November</td><td>5, 19</td><td>12, 26</td></tr> <tr><td>December</td><td>3, 17</td><td>10, 24</td></tr> <tr><td>January 2025</td><td>7, 21</td><td>14, 28</td></tr> <tr><td>February</td><td>4, 18</td><td>11, 25</td></tr> <tr><td>March</td><td>4, 18</td><td>11, 25</td></tr> </tbody> </table>	Month	Paper and cloth	Bottles and cans	April 2024	9, 23	2, 16, 30	May	7, 21	14, 28	June	4, 18	11, 25	July	2, 16, 30	9, 23	August	13, 27	6, 20	September	10, 24	3, 17	October	8, 22	1, 15, 29	November	5, 19	12, 26	December	3, 17	10, 24	January 2025	7, 21	14, 28	February	4, 18	11, 25	March	4, 18	11, 25	<p>② Non-burnable garbage ③ Hazardous garbage ④ Recyclable items (1) Paper and cloth (2) Bottles and cans (for food/drink)</p> <p>(1) and (2) are collected alternately. Confirm with following calendar.</p> <table border="1"> <thead> <tr> <th>Month</th> <th>Paper and cloth</th> <th>Bottles and cans</th> </tr> </thead> <tbody> <tr><td>April 2024</td><td>3, 17</td><td>10, 24</td></tr> <tr><td>May</td><td>1, 15, 29</td><td>8, 22</td></tr> <tr><td>June</td><td>12, 26</td><td>5, 19</td></tr> <tr><td>July</td><td>10, 24</td><td>3, 17, 31</td></tr> <tr><td>August</td><td>7, 21</td><td>14, 28</td></tr> <tr><td>September</td><td>4, 18</td><td>11, 25</td></tr> <tr><td>October</td><td>2, 16, 30</td><td>9, 23</td></tr> <tr><td>November</td><td>13, 27</td><td>6, 20</td></tr> <tr><td>December</td><td>11, 25</td><td>4, 18</td></tr> <tr><td>January 2025</td><td>15, 29</td><td>8, 22</td></tr> <tr><td>February</td><td>12, 26</td><td>5, 19</td></tr> <tr><td>March</td><td>12, 26</td><td>5, 19</td></tr> </tbody> </table>	Month	Paper and cloth	Bottles and cans	April 2024	3, 17	10, 24	May	1, 15, 29	8, 22	June	12, 26	5, 19	July	10, 24	3, 17, 31	August	7, 21	14, 28	September	4, 18	11, 25	October	2, 16, 30	9, 23	November	13, 27	6, 20	December	11, 25	4, 18	January 2025	15, 29	8, 22	February	12, 26	5, 19	March	12, 26	5, 19	<p>② Non-burnable garbage ③ Hazardous garbage ④ Recyclable items (1) Paper and cloth (2) Bottles and cans (for food/drink)</p> <p>(1) and (2) are collected alternately. Confirm with following calendar.</p> <table border="1"> <thead> <tr> <th>Month</th> <th>Paper and cloth</th> <th>Bottles and cans</th> </tr> </thead> <tbody> <tr><td>April 2024</td><td>11, 25</td><td>4, 18</td></tr> <tr><td>May</td><td>9, 23</td><td>2, 16, 30</td></tr> <tr><td>June</td><td>6, 20</td><td>13, 27</td></tr> <tr><td>July</td><td>4, 18</td><td>11, 25</td></tr> <tr><td>August</td><td>1, 15, 29</td><td>8, 22</td></tr> <tr><td>September</td><td>12, 26</td><td>5, 19</td></tr> <tr><td>October</td><td>10, 24</td><td>3, 17, 31</td></tr> <tr><td>November</td><td>7, 21</td><td>14, 28</td></tr> <tr><td>December</td><td>5, 19</td><td>12, 26</td></tr> <tr><td>January 2025</td><td>9, 23</td><td>16, 30</td></tr> <tr><td>February</td><td>6, 20</td><td>13, 27</td></tr> <tr><td>March</td><td>6, 20</td><td>13, 27</td></tr> </tbody> </table>	Month	Paper and cloth	Bottles and cans	April 2024	11, 25	4, 18	May	9, 23	2, 16, 30	June	6, 20	13, 27	July	4, 18	11, 25	August	1, 15, 29	8, 22	September	12, 26	5, 19	October	10, 24	3, 17, 31	November	7, 21	14, 28	December	5, 19	12, 26	January 2025	9, 23	16, 30	February	6, 20	13, 27	March	6, 20	13, 27	<p>② Non-burnable garbage ③ Hazardous garbage ④ Recyclable items (1) Paper and cloth (2) Bottles and cans (for food/drink)</p> <p>(1) and (2) are collected alternately. Confirm with following calendar.</p> <table border="1"> <thead> <tr> <th>Month</th> <th>Paper and cloth</th> <th>Bottles and cans</th> </tr> </thead> <tbody> <tr><td>April 2024</td><td>12, 26</td><td>5, 19</td></tr> <tr><td>May</td><td>17, 31</td><td>10, 24</td></tr> <tr><td>June</td><td>14, 28</td><td>7, 21</td></tr> <tr><td>July</td><td>12, 26</td><td>5, 19</td></tr> <tr><td>August</td><td>9, 23</td><td>2, 16, 30</td></tr> <tr><td>September</td><td>6, 20</td><td>13, 27</td></tr> <tr><td>October</td><td>4, 18</td><td>11, 25</td></tr> <tr><td>November</td><td>1, 15, 29</td><td>8, 22</td></tr> <tr><td>December</td><td>13, 27</td><td>6, 20</td></tr> <tr><td>January 2025</td><td>17, 31</td><td>10, 24</td></tr> <tr><td>February</td><td>14, 28</td><td>7, 21</td></tr> <tr><td>March</td><td>14, 28</td><td>7, 21</td></tr> </tbody> </table>	Month	Paper and cloth	Bottles and cans	April 2024	12, 26	5, 19	May	17, 31	10, 24	June	14, 28	7, 21	July	12, 26	5, 19	August	9, 23	2, 16, 30	September	6, 20	13, 27	October	4, 18	11, 25	November	1, 15, 29	8, 22	December	13, 27	6, 20	January 2025	17, 31	10, 24	February	14, 28	7, 21	March	14, 28	7, 21	<p>② Non-burnable garbage ③ Hazardous garbage ④ Recyclable items (1) Paper and cloth (2) Bottles and cans (for food/drink)</p> <p>(1) and (2) are collected alternately. Confirm with following calendar.</p> <table border="1"> <thead> <tr> <th>Month</th> <th>Paper and cloth</th> <th>Bottles and cans</th> </tr> </thead> <tbody> <tr><td>April 2024</td><td>6, 20</td><td>13, 27</td></tr> <tr><td>May</td><td>11, 25</td><td>18</td></tr> <tr><td>June</td><td>8, 22</td><td>1, 15, 29</td></tr> <tr><td>July</td><td>6, 20</td><td>13, 27</td></tr> <tr><td>August</td><td>3, 17, 31</td><td>10, 24</td></tr> <tr><td>September</td><td>14, 28</td><td>7, 21</td></tr> <tr><td>October</td><td>12, 26</td><td>5, 19</td></tr> <tr><td>November</td><td>9, 23</td><td>2, 16, 30</td></tr> <tr><td>December</td><td>7, 21</td><td>14, 28</td></tr> <tr><td>January 2025</td><td>4, 18</td><td>11, 25</td></tr> <tr><td>February</td><td>1, 15</td><td>8, 22</td></tr> <tr><td>March</td><td>1, 15, 29</td><td>8, 22</td></tr> </tbody> </table>	Month	Paper and cloth	Bottles and cans	April 2024	6, 20	13, 27	May	11, 25	18	June	8, 22	1, 15, 29	July	6, 20	13, 27	August	3, 17, 31	10, 24	September	14, 28	7, 21	October	12, 26	5, 19	November	9, 23	2, 16, 30	December	7, 21	14, 28	January 2025	4, 18	11, 25	February	1, 15	8, 22	March	1, 15, 29	8, 22
Month	Paper and cloth	Bottles and cans																																																																																																																																																																																																																																													
April 2024	8, 22	1, 15, 29																																																																																																																																																																																																																																													
May	6, 20	13, 27																																																																																																																																																																																																																																													
June	3, 17	10, 24																																																																																																																																																																																																																																													
July	1, 15, 29	8, 22																																																																																																																																																																																																																																													
August	12, 26	5, 19																																																																																																																																																																																																																																													
September	9, 23	2, 16, 30																																																																																																																																																																																																																																													
October	7, 21	14, 28																																																																																																																																																																																																																																													
November	4, 18	11, 25																																																																																																																																																																																																																																													
December	2, 16, 30	9, 23																																																																																																																																																																																																																																													
January 2025	13, 27	6, 20																																																																																																																																																																																																																																													
February	10, 24	3, 17																																																																																																																																																																																																																																													
March	10, 24	3, 17, 31																																																																																																																																																																																																																																													
Month	Paper and cloth	Bottles and cans																																																																																																																																																																																																																																													
April 2024	9, 23	2, 16, 30																																																																																																																																																																																																																																													
May	7, 21	14, 28																																																																																																																																																																																																																																													
June	4, 18	11, 25																																																																																																																																																																																																																																													
July	2, 16, 30	9, 23																																																																																																																																																																																																																																													
August	13, 27	6, 20																																																																																																																																																																																																																																													
September	10, 24	3, 17																																																																																																																																																																																																																																													
October	8, 22	1, 15, 29																																																																																																																																																																																																																																													
November	5, 19	12, 26																																																																																																																																																																																																																																													
December	3, 17	10, 24																																																																																																																																																																																																																																													
January 2025	7, 21	14, 28																																																																																																																																																																																																																																													
February	4, 18	11, 25																																																																																																																																																																																																																																													
March	4, 18	11, 25																																																																																																																																																																																																																																													
Month	Paper and cloth	Bottles and cans																																																																																																																																																																																																																																													
April 2024	3, 17	10, 24																																																																																																																																																																																																																																													
May	1, 15, 29	8, 22																																																																																																																																																																																																																																													
June	12, 26	5, 19																																																																																																																																																																																																																																													
July	10, 24	3, 17, 31																																																																																																																																																																																																																																													
August	7, 21	14, 28																																																																																																																																																																																																																																													
September	4, 18	11, 25																																																																																																																																																																																																																																													
October	2, 16, 30	9, 23																																																																																																																																																																																																																																													
November	13, 27	6, 20																																																																																																																																																																																																																																													
December	11, 25	4, 18																																																																																																																																																																																																																																													
January 2025	15, 29	8, 22																																																																																																																																																																																																																																													
February	12, 26	5, 19																																																																																																																																																																																																																																													
March	12, 26	5, 19																																																																																																																																																																																																																																													
Month	Paper and cloth	Bottles and cans																																																																																																																																																																																																																																													
April 2024	11, 25	4, 18																																																																																																																																																																																																																																													
May	9, 23	2, 16, 30																																																																																																																																																																																																																																													
June	6, 20	13, 27																																																																																																																																																																																																																																													
July	4, 18	11, 25																																																																																																																																																																																																																																													
August	1, 15, 29	8, 22																																																																																																																																																																																																																																													
September	12, 26	5, 19																																																																																																																																																																																																																																													
October	10, 24	3, 17, 31																																																																																																																																																																																																																																													
November	7, 21	14, 28																																																																																																																																																																																																																																													
December	5, 19	12, 26																																																																																																																																																																																																																																													
January 2025	9, 23	16, 30																																																																																																																																																																																																																																													
February	6, 20	13, 27																																																																																																																																																																																																																																													
March	6, 20	13, 27																																																																																																																																																																																																																																													
Month	Paper and cloth	Bottles and cans																																																																																																																																																																																																																																													
April 2024	12, 26	5, 19																																																																																																																																																																																																																																													
May	17, 31	10, 24																																																																																																																																																																																																																																													
June	14, 28	7, 21																																																																																																																																																																																																																																													
July	12, 26	5, 19																																																																																																																																																																																																																																													
August	9, 23	2, 16, 30																																																																																																																																																																																																																																													
September	6, 20	13, 27																																																																																																																																																																																																																																													
October	4, 18	11, 25																																																																																																																																																																																																																																													
November	1, 15, 29	8, 22																																																																																																																																																																																																																																													
December	13, 27	6, 20																																																																																																																																																																																																																																													
January 2025	17, 31	10, 24																																																																																																																																																																																																																																													
February	14, 28	7, 21																																																																																																																																																																																																																																													
March	14, 28	7, 21																																																																																																																																																																																																																																													
Month	Paper and cloth	Bottles and cans																																																																																																																																																																																																																																													
April 2024	6, 20	13, 27																																																																																																																																																																																																																																													
May	11, 25	18																																																																																																																																																																																																																																													
June	8, 22	1, 15, 29																																																																																																																																																																																																																																													
July	6, 20	13, 27																																																																																																																																																																																																																																													
August	3, 17, 31	10, 24																																																																																																																																																																																																																																													
September	14, 28	7, 21																																																																																																																																																																																																																																													
October	12, 26	5, 19																																																																																																																																																																																																																																													
November	9, 23	2, 16, 30																																																																																																																																																																																																																																													
December	7, 21	14, 28																																																																																																																																																																																																																																													
January 2025	4, 18	11, 25																																																																																																																																																																																																																																													
February	1, 15	8, 22																																																																																																																																																																																																																																													
March	1, 15, 29	8, 22																																																																																																																																																																																																																																													
⑤ Recyclable plastic items Plastic containers and wrapping Wed	⑤ Recyclable plastic items Plastic containers and wrapping Thu	⑤ Recyclable plastic items Plastic containers and wrapping Fri	⑤ Recyclable plastic items Plastic containers and wrapping Sat	⑤ Recyclable plastic items Plastic containers and wrapping Mon	⑤ Recyclable plastic items Plastic containers and wrapping Tue																																																																																																																																																																																																																																										
⑥ Non-recyclable plastic garbage (other than plastic containers and wrapping) Fri	⑥ Non-recyclable plastic garbage (other than plastic containers and wrapping) Sat	⑥ Non-recyclable plastic garbage (other than plastic containers and wrapping) Mon	⑥ Non-recyclable plastic garbage (other than plastic containers and wrapping) Tue	⑥ Non-recyclable plastic garbage (other than plastic containers and wrapping) Wed	⑥ Non-recyclable plastic garbage (other than plastic containers and wrapping) Thu																																																																																																																																																																																																																																										