

2022 Revised Version

Matsudo City

Garbage Disposal Guide

Some of the **garbage sorting classifications** and **collection days** will change on February 1, 2022.
→ Page 1



Matsudo City garbage reduction symbol character [Kurinkuru-chan]

Smartphone app available!

Can be downloaded from the QR code to the right.
Notifies users of the collection days and sends new information.
Let's get registered!



For iPhone



For Android



Garbage Disposal Rules

- Correctly sort and dispose in the specified manner.
- When disposing in a plastic bag, securely tie the mouth of the bag.
- Place the garbage out **by 8:30 a.m.** on the collection day.
- Garbage not following the rules will not be collected, so sort the garbage in accordance to the rules.



Burnable garbage
Page 2

Non-burnable garbage
Pages 3 to 4

Recyclable items
(1) Paper and cloth
Page 5
(2) Bottles and cans (for food/beverage)
Page 6

Hazardous and other garbage
Page 7

Recyclable plastic items
Page 8

Non-recyclable plastic garbage
Page 8

Bulk garbage
Pages 9 to 10

Garbage the City Does Not Collect or Handle
Pages 11 to 12

PET bottles
Page 13

Garbage Classification List
Pages 14 to 24

Notice
Pages 25 to 30

If you cannot figure out where to call OR who to contact

Matsudo City Household Garbage Consultation Call Center ☎0120-264-057

Some IP phones [fee charged] ☎050-5358-9687

Reception Hours: 8:30 a.m. to 5 p.m. (Closed on Sundays, May 3 to 5, and December 31 to January 3)

Classification Changes

The sorting classifications and collection system were changed on February 2022. Changes are as follows.

Sorting Classification Changes

- ① "Burnable garbage" (燃やせるごみ) → "Burnable garbage" (可燃ごみ)
Only the name in Japanese is changed
- ② "Pottery, porcelain, and glass garbage" → "Non-burnable garbage"
- ③ "Metal products, etc." from recyclable items → "Non-burnable garbage"
- ④ 7 items from bulk garbage (Collected at the collection sites) → "Non-burnable garbage"

Collection Day Changes

- ⑤ "Non-burnable garbage" collection days → Same day as "Recyclable Items"
- ⑥ "Pottery, porcelain, and glass garbage" Once a month → Once a week as "Non-burnable garbage"
- ⑦ "Paper and cloth", "Bottles and cans" Once a week → Every other week (alternate week)

Current	○days Burnable garbage 3 times a week	×days Pottery, porcelain, and glass garbage Once a month	△days Recyclable items Once a week Metal products, etc. Paper and cloth Bottles and cans	Once a week Hazardous and other garbage	□days Recyclable plastic items Once a week ◇days Non-recyclable plastic garbage (other than plastic containers and wrapping) Once a week Collection at commercial sites PET bottles	Requires application (fee charged) Bulk garbage 7 items from here

After change	○days ① Burnable garbage 3 times a week Kitchen scraps Nonrecyclable paper	△days ⑤ ⑥ Non-burnable garbage Once a week ② Pottery, porcelain, and glass garbage Plastic products (30cm or larger but smaller than 50cm) ③ Metal products, etc. Small household appliances Spray cans Bicycles ④ 7 items changed from bulk garbage to non-burnable garbage	Once a week Recyclable items Paper and cloth ⑦ Every other week (alternate week) Bottles and cans	Once a week Hazardous and other garbage	□days Recyclable plastic items Once a week ◇days Non-recyclable plastic garbage (other than plastic containers and wrapping) Once a week Collection at commercial sites PET bottles	Requires application (fee charged) Bulk garbage Items with 1 side of about 50cm or more Electric bicycles

7 items changed from "bulk garbage" to "non-burnable garbage"

- Lids for bathtub
Fold and bundle together with string
- Ironing boards
Fold the legs (ones that cannot fold the legs and 50cm or larger is bulk garbage)
- Carpets
Up to 4.5 tatami mat size (fold and bundle with string)
- Japanese cushions
Smaller than 80cm
- Cushions
Smaller than 80cm
- Microwaves
Smaller than 50cm
- Clothes cases
Smaller than 80cm (1 item per 1 collection)



Matsudo City garbage reduction symbol character [Kurinkuru-chan]

The facilities that bulk garbage can be taken to will change from April 1, 2022.

Matsudo Recycle Center is a facility to process the "bulk garbage", "non-burnable garbage", and "hazardous and other garbage" together, which is being built at the old Rokuwa Clean Center site (316-4 Shichiuemonshinden). Therefore, the facilities that bulk garbage can be taken to will change from April 1, 2022.

Up to March 31, 2022

As it was previously
Carry in to 3 facilities

◆ Wanagaya Clean Center

- Futons, • Carpets, etc.
- Wooden bulk garbage

◆ Higurashi Clean Center

- Plastic bulk garbage

◆ Resources Recycling Center

- Metallic bulk garbage

From April 1, 2022

Consolidate all self carry-in of bulk garbage to Matsudo Recycle Center

Matsudo City Recycle Center

- Wooden, plastic, and metal bulk garbage (including futons and carpets)
- Garbage such as metal products, household appliances, pottery, porcelain, and glass etc. (non-burnable garbage)

* Items listed in the Household Appliance Recycling Act, PCs, paper, cloth, bottles, and cans cannot be carried in.
* Telephone number will be shared as soon as it is determined on city website, etc.



Make sure to call the facility to receive approval before bringing your garbage.

Contact

○ Wanagaya Clean Center ☎047-392-1118

○ Higurashi Clean Center ☎047-388-6555

○ Resources Recycling Center ☎047-384-7890

Burnable garbage

Japanese name change included in the February 2022 classification changes.

3 times a week

How to Dispose of Burnable Garbage

Place in a bag authorized by [Matsudo City for burnable garbage](#) when disposing.

* Securely tie the mouth of the bag before disposing.

Bags authorized by Matsudo City for burnable garbage are sold at nearby convenience stores, supermarkets, retailers, etc. (There are extra large, large, medium, and small bags)

- [NOTE]
- To prevent the spread of contagious diseases, you may place masks in small individual plastic bags, seal the bag, and then place the sealed bag in a bag authorized by Matsudo City.
 - Pruned branches, fallen leaves and mown grass will be collected on the same day as “recyclable items” and “non-burnable garbage”. (See Page 4)
 - Garbage cannot be disposed of in black plastic bags or bags authorized by other municipalities.
 - Garbage can also be disposed of in the previous bag authorized by Matsudo City for burnable garbage (with old Japanese name).



Items for burnable garbage

Kitchen scraps



80% of kitchen scraps are water. Reduce the amount of garbage by thoroughly draining the water.

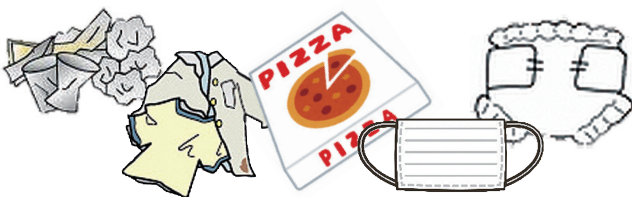
Edible oils



Absorb small amounts using paper or cloth, or solidify with a solidifier agent.

“Used Oil Collection Model Project” (see Page 25)

Nonrecyclable paper and cloth



Papers that cannot be recycled such as feminine hygiene products, tissue papers, pet training sheets, cigarette butts, photographs, paper scented with soap, etc., clothes that are wet or dirty.

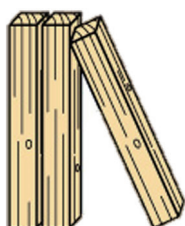
Genuine leather products, etc.



Shoes that have rubber parts such as soles, etc., should be disposed of as “non-recyclable plastic garbage (other than plastic containers and wrapping)”. (See Page 8)

Use the collection box for genuine leather shoes, bags, and belts if they can still be used. (See Page 25)

Boards, lumbers, etc.



Cut to length less than 50cm and width/thickness less than 10cm. These can also be disposed of by bundling with string.

Wooden products



Smaller than 50cm

Non-burnable garbage

Due to the classification changes on February 2022, some items from “pottery, porcelain, and glass garbage”, “recyclable items (metal products, etc.)”, “small household appliances”, and “bulk garbage” will be classified as “non-burnable garbage”.

Once a week

How to Dispose of Non-burnable Garbage

Dispose by placing the garbage in a transparent or semitransparent plastic bag.

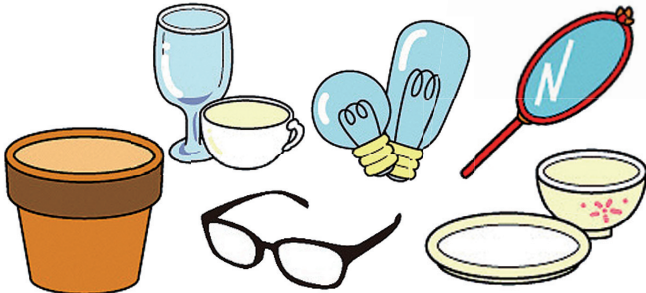
* Securely tie the mouth of the bag before disposing.

- [NOTE]
- Wrap sharp objects such as broken pottery, porcelain, and glass, or anything with a blade in a newspaper, etc., place it in a plastic bag, and clearly specify as “**きけん**” (dangerous) when disposing.
 - Umbrellas, small household appliances, bicycles, plastic products 30cm or larger but smaller than 50cm, and the specific 7 items reclassified from the bulk garbage can be disposed of without placing them in a plastic bag.
 - Garbage cannot be disposed of in black plastic bags, bags authorized by Matsudo City for burnable garbage, or bags authorized by other municipalities.



Items for Non-burnable Garbage

Pottery, porcelain, and glass products



Includes cosmetics bottles and medicine bottles (bottles other than for food or beverage).

Knives, scissors, etc.



Please wrap sharp objects in newspaper, etc., place in a plastic bag, and label the package “**きけん**” (dangerous).

Plastic products that are 30cm or larger but smaller than 50cm



- Ones that are smaller than 30cm should be disposed as “non-recyclable plastic garbage (other than plastic containers and wrapping)”. (See Page 8)
- Ones that are 50cm or larger should be disposed as “bulk garbage”. (See Pages 9 to 10)

Aluminum, etc.



Aluminum foils, disposable body warmers, aluminum pots for packaged udon noodles, etc.

Spray cans, etc. (other than for food or beverage)



Spray cans



18-liter cans

Paint cans

Use the contents completely.

- Spray cans
Do not punch a hole.
Bring the unused cans or cans with contents still remaining to Matsudo Recycle Center. (See Page 10)

Metal products, etc.



* Including cans not used for food or beverage.

Items for Non-burnable Garbage

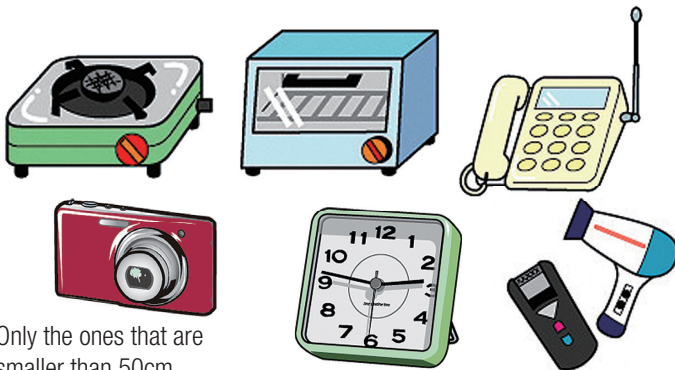
Bicycles (including tricycles)



Label bicycles, unicycles, tricycles, kick scooters, etc., as “ごみ” (garbage) before disposal.

Electric bicycles are “bulk garbage”.
(See Pages 9 to 10)

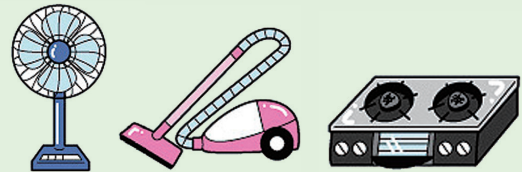
Small Household Appliances



Only the ones that are smaller than 50cm

* Some exceptions (these will be collected even if it is larger than 50cm)

Do not place fans (propeller type), vacuum cleaners, gas ranges, etc., into a bag when disposing.



7 Items Reclassified from Bulk Garbage



Ironing boards

Fold the legs.
(ones that cannot fold the legs and are 50cm or larger are bulk garbage)
(See Pages 9 to 10)



Clothes cases (smaller than 80cm)



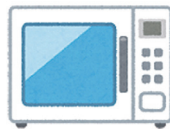
Carpets (Up to 4.5 tatami mat size)



Japanese cushions (smaller than 80cm)



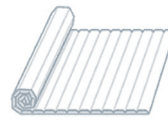
Cushions (smaller than 80cm)



Microwaves (smaller than 50cm)

1 item can be disposed per 1 collection. Ones with 2 or more shelves will be treated as bulk garbage.

Fold into a small size.



Bath tub lids

- ① Accordion type
Roll up and tie with a string.
- ② Separated type
Bundle and tie with a string.

Place the ones that can fit in a plastic bag.
Dispose as is for the ones that cannot fit in the bag.

Some items in “bulk garbage” is reclassified as “non-burnable garbage”. (See Page 1)

Small Amount of Pruned Branches, Fallen Leaves, Mown Grass

[NOTE]

- Dispose of pruned branches, fallen leaves and mown grass on the same day as “non-burnable garbage” and “recyclable items”.
- Dispose flowers, fruits, berries, stems, vegetables from home garden as “burnable garbage”. (See Page 2)
→ Due to odor and containing large amounts of water
- **Open burning of garbage is prohibited by the law.**

Pruned branches

Cut to length less than 50cm and thickness less than 10cm, bundle with a string, and dispose in small amounts.



Fallen leaves, mown grass

Place garbage in **bags authorized by Matsudo City for burnable garbage** or **transparent or semi-transparent plastic bags** before disposing.
Tie the mouth of the bag firmly before disposing.



Recyclable items

- (1) Paper and cloth
- (2) Bottles and cans (for food or beverage) are collected **alternately every other week.**

These can be disposed of at local group collection. (See Page 13)

Once a week

Recyclable Items (1) How to Dispose of Paper and Cloth

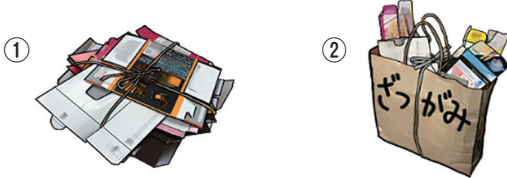
Papers

● Papers

Tie similar type crosswise with string before disposing.
(Vinyl string, paper tape, Suzuran Tape)

● Miscellaneous papers [Dispose of using either method ① or ②.]

- ① Tie the miscellaneous papers crosswise with string before disposing.
(Tie securely so it will not unravel)
- ② Place it in a paper bag, tie one way vertically so the contents can be seen, and clearly specify as “ざつがみ” (miscellaneous papers) before disposing.



Clothes

Do not dispose on a rainy day.

Wet or moldy clothes cannot be disposed of because they cannot be recycled.

[Dispose of using either method ① or ②.]

- ① Dispose by placing the garbage in a transparent or semitransparent plastic bag.
Tie the mouth of the bag firmly before disposing.
- ② Tie with string before disposing.
(Vinyl string, paper tape, Suzuran Tape)

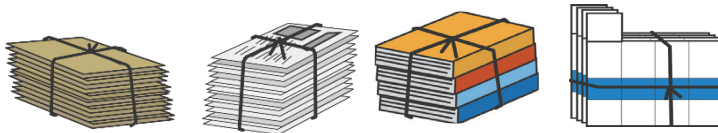


Clearly specify as “ぬのるい” (clothes) when disposing in a plastic bag.

Recyclable Items (1) Paper and Cloth Items

Papers

Cardboards, newspapers, fliers, magazines, books, paper cartons



Wash and dry the paper carton, and then open it up.

Precautions when disposing

- ① Once you have enough to bundle, tie crosswise with string before disposing.
- ② Do not wrap with anything other than a string. (adhesive gummed tape, stretch film, etc.)
- ③ Do not discard in a plastic bag.
- ④ Newspapers cannot be disposed using the newspaper organizing bags (paper or plastic) that are supplied by the newspaper distributor, etc.

Miscellaneous papers

Paper that can be recycled other than cardboards, newspapers, fliers, magazines, books, and paper cartons



- Garbage that is dirty, processed papers, and scented paper should be disposed as “burnable garbage”.
- Dispose of shredded papers that fall under miscellaneous paper in a manner that does not allow them to scatter. In the case of large amounts, dispose as “burnable garbage”. (See Page 2)

Clothes

Clothes, blankets, sheets, towels, curtains, etc.

- Excluding clothes, items containing cotton or sponge (including quilting) are bulk garbage. (See Pages 9 to 10)
- Following items are not collected as recyclable items.
Futons, bed pads → Bulk garbage
Carpets, zabutons, cushions, pillows, mats → Can be disposed as “non-burnable garbage” depending on the size. (See Pages 3 to 4)



Recyclable Items (2) How to Dispose of Bottles and Cans

Place the garbage in **a transparent or semitransparent plastic bag**.

* Garbage cannot be disposed of in black plastic bags, bags authorized by Matsudo City for burnable garbage, or bags authorized by other municipalities.

* Tie the mouth of the bag firmly before disposing.

Bottles and cans can be disposed of together in a single plastic bag.
Dispose after rinsing out the contents with water.



Recyclable Items (2) Bottles and Cans (for Food/Beverage)

Bottles

Food and beverage bottles, jam bottles, dressing bottles, etc.



- Dispose empty cosmetics bottles, medicine bottles, etc., as “non-burnable garbage”. (See Page 3)

Cans

Food and beverage cans, canned food cans, etc.



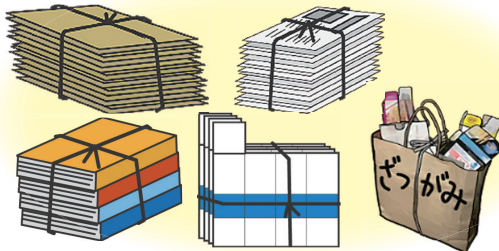
- Dispose spray cans, 18liter square cans, paint cans, etc., as “non-burnable garbage”. (See Page 3)

How Recyclable Items are Collected

Due to the classification changes on February 2022, there will be two types of recyclable items, (1) paper and cloth, and (2) bottles and cans (for food/beverage).

Also, the collection date will change from once a week to alternating weeks for each type.

(1) Paper and cloth



Collected alternately every other week



(2) Bottles and cans (for food/beverage)



(2) Bottles and cans (for food/beverage) cannot be disposed of on the collection days for (1) paper and cloth. Dispose of (2) bottles and cans (for food/beverage) the next week. At that time, (1) Paper and cloth cannot be disposed of at that time. Check the collection days on the flyer in the “How to Separate/Dispose of Household Garbage” that is issued annually.

Facility to Carry In Recyclable Items **Call and confirm in advance when carrying in.**

(1) Paper and cloth

Kinoshita Co., Ltd. 5-15-4 Minoridai ☎047-308-8661	Green Co., Ltd. 879 Kamishiki ☎047-391-1588	Saito Eiji Co., Ltd. 954-7 Wanagaya ☎04-7186-6701 (Main Office)	Yamamuro Co., Ltd. 727 Kamihongo ☎047-362-5170	Resource Gaia Co., Ltd. 6-10-14 Minoridai ☎047-360-5181
--	---	--	--	---

(2) Bottles and cans (for food/beverage)

Isaka Enterprise Co., Ltd. 86 Kamihongo ☎047-331-7100	Resource Gaia Co., Ltd. 6-10-14 Minoridai ☎047-360-5181
---	---

Hazardous and other garbage

Once a week

How to Dispose of Hazardous and Other Garbage

Place the garbage in a transparent or semitransparent plastic bag.

Garbage cannot be disposed of in black plastic bags, bags authorized by Matsudo City for burnable garbage, or bags authorized by other municipalities.

* Securely tie the mouth of the bag before disposing.

Clearly specify as “ゆうがい” (hazardous garbage).



Items for Hazardous and Other Garbage

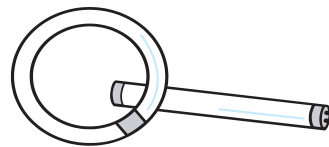
Dry cell batteries and coin-type batteries



Small rechargeable batteries and button-type batteries cannot be disposed of.

Take them to a nearby household appliance retailers, etc., that have a “small rechargeable batteries recycling box” or “button batteries recycling box”.

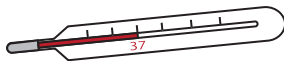
Fluorescent lights (tubes) * including light bulb type



Includes LED. In case of LED, clearly specify as “LED”.

These can also be disposed of by placing them in the box of the newly purchased ones.

Thermometers

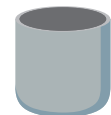


Dispose of the thermometers that use mercury as “hazardous and other garbage”. Dispose of the electronic and LCD type as “non-burnable garbage”.

Diatomite products



Bath mats



Toothbrush holders



Coasters

Products containing asbestos as specified by the Ministry of Health, Labor and Welfare are collected voluntarily by the manufacturer.

Also, other products less than 50cm shall be disposed of as “hazardous and other garbage”.

50cm or larger will be treated as bulk garbage. (See Pages 9 to 10)

May Ignite!



Dispose of electronic devices that have lithium batteries that cannot be removed as “**non-burnable garbage**”.

Many rechargeable electronic devices, such as electronic cigarettes and portable batteries, have lithium-ion batteries built into them. These batteries cannot be removed, and using excessive force to try to do so raises the risk of the device overheating and even igniting. Place the garbage in a transparent or semitransparent plastic bag when disposing.

Recyclable plastic items

Once a week



Plastic products that are 30cm or larger but smaller than 50cm can be disposed of as “non-recyclable plastic garbage (other than plastic containers and wrapping)”.

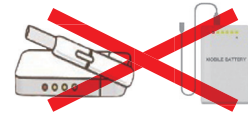
How to dispose of recyclable plastic items

- Place the garbage in **a transparent or semitransparent plastic bag**. Garbage cannot be disposed of in black plastic bags, bags authorized by Matsudo City for burnable garbage, or bags authorized by other municipalities.
- Securely tie the mouth of the bag before disposing.
- Plastic containers and wrappings that are dirty should be disposed as “non-recyclable plastic garbage (other than plastic containers and wrapping)”.



Do not mix!

Dispose of electronic devices that have lithium batteries that cannot be removed as non-burnable garbage!



List of recyclable plastic items

Cups, trays	Plastic bags, plastic wraps	Plastic bottles and containers	Caps and labels	Styrofoams

* Plastic containers and wrappings that are dirty should be disposed as “non-recyclable plastic garbage (other than plastic containers and wrapping)”.

Non-recyclable plastic garbage (other than plastic containers and wrapping)

Once a week

Plastic products that are smaller than 30cm. Plastic products that are 30cm or larger but smaller than 50cm can be disposed of as “non-burnable garbage”, and products that are 50cm or larger can be disposed of as “bulk garbage.” (See Pages 9 to 10)

How to dispose of non-recyclable plastic garbage (other than plastic containers and wrapping)

- Place the garbage in **a transparent or semitransparent plastic bag**. Garbage cannot be disposed of in black plastic bags, bags authorized by Matsudo City for burnable garbage, or bags authorized by other municipalities.
- Securely tie the mouth of the bag before disposing.
- Use the “Shoes, Bags, and Belts” Collection Box (See Page 25)



Large plastic products larger than 30cm can be disposed of as “non-recyclable plastic garbage (other than plastic containers and wrapping)” if they can be **cut to smaller than 30cm**.

Example: Quilted products such as bed pads, vinyl hoses



List of non-recyclable plastic garbage (other than plastic containers and wrapping)

Writing utensils and everyday items	Rubber and synthetic leather items	Toys and tapes, etc

* Wrap with adhesive gummed tape one-by-one to prevent the tape from sticking out.

Bulk garbage

Items with length of 50cm or more on 1 side
Collected on an individual basis or **carried in**
to a garbage processing facility

When Applying for a Collection (Collected on an Individual Basis)

① Apply by telephone

It may take more than 1 month to collect depending on the situation.

Bulk Garbage Reception Center ☎047-391-0007

Reception Hours: 8:30 a.m. to 5 p.m.

(Excluding Sundays, national holidays, substitute holidays, year-end/New Year)

* There are many calls to the incorrect numbers. Please call only after confirming the number.

* Phone lines may be very busy during the end of the year, moving season, etc. Please apply early with sufficient time to spare.

② Purchase the “bulk garbage handling ticket”

Purchase 1 “bulk garbage handling ticket” for ¥1,000 for each piece of bulk garbage at the ticket-handling outlet.

③ Affix the “bulk garbage handling ticket”

Please write your name and the date of collection on the “bulk garbage ticket” and attach it directly on your bulk garbage. Tear off the receipt (right-side portion), and store it in a safe place until the collection is completed.

④ Dispose of the bulk garbage

Location: Single unit house ... In front of gate, garage facing a road, etc.

Apartment building ... Close to entrance on first floor, next to garbage collection site

* Collection of garbage inside your house or premises is not possible.

Time: Place the garbage at the specified location by 8:30 a.m. of the collection day.

Bulk Garbage Handling Ticket Offices

Purchase the bulk garbage handling ticket after applying for the collection.

Store with “Bulk Garbage Handling Ticket Offices” sticker affixed

○ Matsudo City Hall, Environmental Management Div. (New Annex 6F), branch offices in Matsudo City

○ Convenience stores, retailers, etc., in Matsudo City

* For locations of the bulk garbage ticket-handling offices, refer to the Matsudo City website or contact the Matsudo City Household Garbage Advice Call Center.

[Refund procedure]

A refund (refund by deposit to a bank account) will be made when you no longer need the Matsudo City bulk garbage handling ticket because you have purchased more than you needed, or you have decided to carry in the bulk garbage to the processing facility. It may take some time before the refund is deposited.

① What you need to apply

○ Seal (private seal OK) ○ Matsudo City bulk garbage handling ticket and receipt ○ Item that can confirm bank account such as passbook, cash card, etc. ● Refund application ● Direct deposit application (● can be downloaded from the website. They are also available at the application sites.)

② **Application sites** Matsudo City Hall, Environmental Management Div. (New Annex 6F), branch offices in Matsudo City



Look for this sticker.

Carrying in to Garbage Processing Facilities

Garbage (excluding papers, clothes, bottles, and cans) can be directly carried into the processing facilities. (Fee charged)

The bulk garbage can be carried in once a day, up to 200kg. However, the carry-in weight varies depending on the type of garbage at each facility, so contact each facility.

Reservation and approval by the processing facility in advance is required when carrying in garbage.

[Required documents] Bring a personal ID (driver's license, health insurance certificate, etc.).

[Precautions] Unload the item yourself following the instruction of a staff.

The location to carry in the bulk garbage will be unified to the Matsudo City Recycle Center from April 2022. When carrying in a large amount of garbage at once, sort by item type when bringing to the processing facility.



Matsudo City garbage reduction symbol character [Kurinkuru-chan]

Garbage Processing Facilities

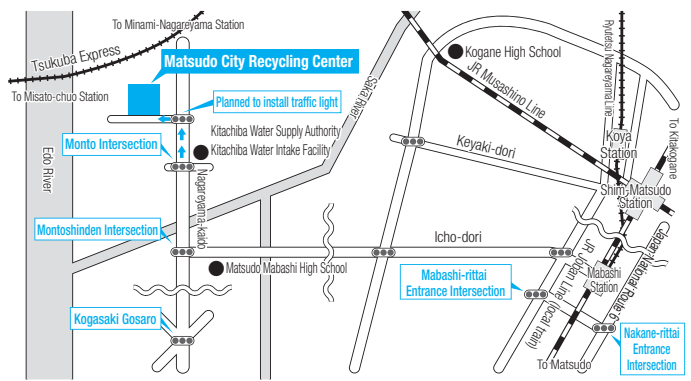
Garbage type	Facility to Carry In	Handling Fee	Reception Hours
<ul style="list-style-type: none"> ● Bulk garbage ● Non-burnable garbage ● Hazardous and other garbage 	Matsudo City Recycle Center	¥17.6 per 1kg (¥16 + tax)	Monday to Saturday 8 :30 a.m. to 4:30 p.m. Excluding Sundays, May 3 to 5, and December 31 to January 3 * The facilities are extremely busy during the year-end/New Year period, immediately after Golden Week, Saturdays, and national holidays.
<ul style="list-style-type: none"> ● Burnable garbage ● Non-recyclable plastic garbage (other than plastic containers and wrapping) 	Wanagaya Clean Center	* Items less than 20kg are considered to be 20kg and charged ¥352 (¥320 + tax)	
<ul style="list-style-type: none"> ● Recyclable plastic items ● Pruned branches, fallen leaves, mown grass 	Higurashi Clean Center		

Matsudo City Recycle Center

316-4 Shichiuemonshinden

Call Center, etc., will be opened.

Details of this facility will be shared via Koho Matsudo newspaper and city website.

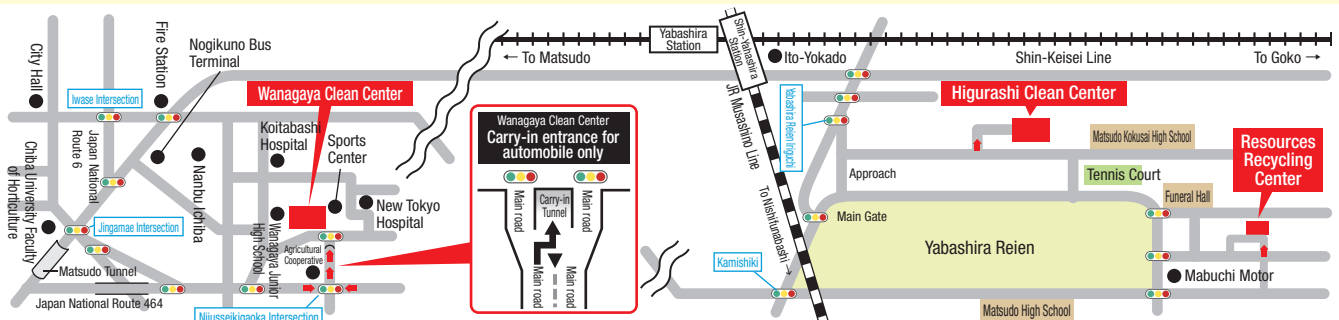


* Until March 31, 2022, bulk garbage can be carried into

Wanagaya Clean Center, Higurashi Clean Center, or Resources Recycling Center.

Note that the bulk garbage carry-in location differs depending on the material.

● Wanagaya Clean Center	Wooden products, futons, etc.
● Higurashi Clean Center	Large plastic products, etc.
● Resources Recycling Center	Household appliances, metal products (excluding items listed in the Household Appliance Recycling Act and PCs) Pottery, porcelain, and glass garbage



Wanagaya Clean Center

1349-2 Wanagaya

☎047-392-1118

Higurashi Clean Center

5-14-1 Gokonishi

☎047-388-6555

Resources Recycling Center

286-15 Matsuhidai

☎047-384-7890

Garbage the City Does Not Collect or Handle

- ① Items listed in the Household Appliance Recycling Act
- ② PCs
- ③ Items difficult to process
- ④ One-time large amounts of garbage, garbage from offices and shops, garbage generated from town associations and events

① Items listed in the Household Appliance Recycling Act

The Household Appliance Recycling Act defines the role of each party when the household appliance retailers are obligated to collect and transport, when the household appliance manufacturers, etc., are obligated to recycle, and the consumers are obligated to bear the collection/transportation fee and the recycling fee when discarding the listed household appliances (air conditioners, refrigerators/freezers, washing machines, drying machines).

* The recycling fee, etc., for each household appliance manufacturer can be confirmed on the Household Appliance Recycling Ticket Center website. (<http://www.rkc.aeha.or.jp/index.html>)

☎0120-319-640 or for some IP phone: ☎03-5249-3455 (fee charged)



Select from the following three methods.

* Purchase the "Household Appliance Recycling Ticket" at the Post Office in advance for methods 2 and 3.

Method 1 Request disposal by a household appliance shop in the city.

* The recycling fee and the collection and transportation fees apply.

Method 2 Carry in to the specified collection sites of the household appliances manufacturers, etc.

Confirm with the following specified collection sites by telephone, attach the "Household Appliance Recycle Ticket", and carry in to the specified collection site.

Specified Collection Sites		
MD Logis Field Service Co., Ltd., Ichikawa Office	3-12 Shiohama, Ichikawa-shi	☎047-395-2549
Shinkashiwasoko Co., Ltd. Kashiwa Office	164 Toyofuta, Kashiwa-shi	☎04-7128-5001
Maruzen Keiyo Butsuryu Co., Ltd., Funabashi Office	19-4 Shiomicho, Funabashi-shi	☎047-431-4880
Shinko Logistics Co., Ltd., Shin-Misato DC	194 Nizo, Misato-shi	☎048-954-7586

Method 3 Request collection by the Matsudo City general waste collection company

Call Matsudo City General Waste Collection Services Cooperative Union Office (introduction of the general waste collection services) by telephone, and request the collection and transport.

* The collection and transportation fees apply in addition to the recycling fee.

☎0120-5353-09 (cannot call from a mobile phone)

☎047-312-2275

2 PCs

Notebook computers can be placed in the small appliances collection box (See Page 26)

When discarding PCs (including PC monitors) that are not being used anymore, request **“collection by a courier service” or “collection by a PC manufacturer”**.

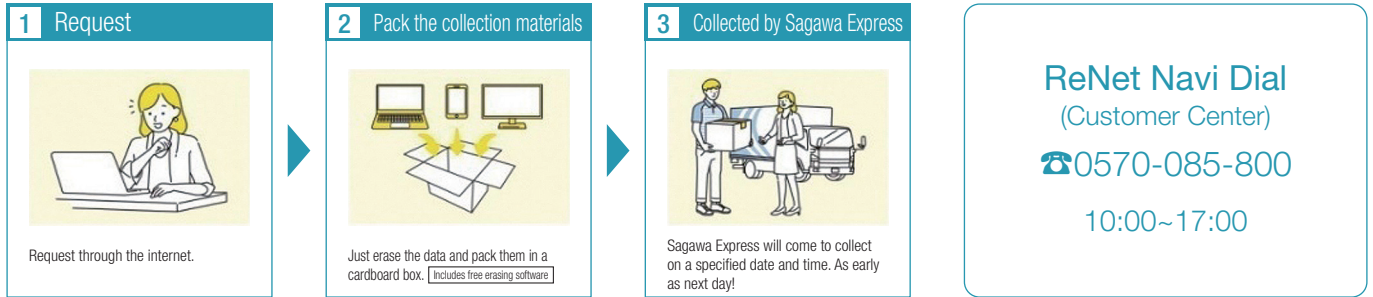
Method 1 Collection by a Courier Service

ReNet Japan Recycle, a partner/cooperator of Matsudo City, collects by courier service. If a PC main unit is included in the collection items, collection fee for 1 box will be free of charge. Accessories such as printers can be collected together. (Maximum size and weight of the box that is free of charge is a total length of 3 sides that are less than 140cm and a weight of 20kg or less)

There is also a service to delete personal information data.

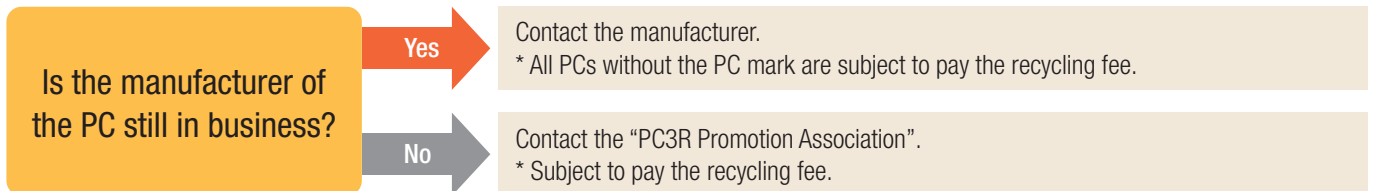
For details on collection methods, collected items, etc., refer to the ReNet Japan Recycle website.

(<https://www.renet.jp/>)



Method 2 Collection by the PC Manufacturer

PCs (including the PC monitor) no longer used in the home are collected by the manufacturer and recycled as a resource by the manufacturer based on the “Law for Promotion of Effective Utilization of Resources (Act for promoting effective use of resources)”. For details on the contact information, collection method, collection/recycling fee, etc., for each manufacturer, refer to the [website of PC3R Promotion Association](#), or contact them at (☎03-5282-7685). (<https://www.pc3r.jp/>)



3 Items Difficult to Process

Consult with the retailers, dealer, or specialized company.

Automotive parts (tires, batteries, etc.), waste oil, paint, pianos, tatami mats, chemicals, heat-resistant safes, fire extinguishers, propane gas cylinders, plaster boards, soil, compost, construction and demolition wastes, etc.

4 One-time large amounts of garbage, garbage from offices, shops, town associations, events, etc.

Either directly carry them in to the city garbage processing facility (take the papers, clothes, bottles, and cans to a commercial garbage disposal facility. [Refer to Page 6]), or request collection to general waste collection company (fees apply).

[Matsudo City General Waste Collection Services Cooperative Union Office]

☎0120-5353-09 (cannot call from a mobile phone) ☎047-312-2275

One-time large amounts of garbage

Large amounts of garbage produced at one time due to a move, major housecleaning, or pruning of trees

Garbage from offices, shops, town associations, etc.

Even a small amount of paper waste or lunch box containers after consumption cannot be disposed of at the household garbage collection site.

Garbage generated at events

Garbage generated at local festivals, various classes, etc.

PET bottles

PET bottles cannot be disposed of at the collection sites.

Bring them to the following shops or utilize the following recycling activities (group collection).

* Containers of oil, detergent, shampoo, rinse, etc., cannot be disposed as PET bottle.



Remove the cap



Peel off the label



Rinse inside
(Dry out)



Crush

Check for this mark



Dispose of the caps and labels as “recyclable plastic items” (see Page 8).

List of Cooperating Plastic PET Bottle Collection Stores

There are also shops other than those mentioned below that have their own collection boxes.

There may be changes, so confirm with each shop.

Handling Location Name	Location	Handling Location Name	Location
Maruetsu Kitamatsudo Store	2220-1 Kamihongo	Maruetsu Kamihongo Store	2-57-1 Nakaicho
Hallo! Mart Shokuhinkan Kitamatsudo Store	2-6-1 Kitamatsudo	Hallo! Mart Mabashi Store	11-1 Nishimabashiakawacho
Maruetsu Yagiri Ekimae Store	19-1 Kuriyama	Daiei Matsudo Nishiguchi Store	4-2 Nemoto
AEON Kitakogane Store	1 Kogane	Ito-Yokado Yabashira Store	1-15-8 Higurashi
Livre Keisei Koganehara Store	6-2-13 Koganehara	Maruetsu Makinohara Store	2-10 Makinohara
Maruetsu Koganehara Store	7-18-3 Koganehara	Ito-Yokado Matsudo Store	1149 Matsudo
Hataya Shoten	2-6-1 Goko	Summit Store Matsudoshinden Store	245-1 Matsudoshinden
Bel'x Goko Store	8-11-1 Goko	Hallo! Mart Minoridai Store	575-7 Matsudoshinden
Bel'x Kitamatsudo Store	2-73-2 Sakaecho	Bel'x Matsuhidai Store	193-1 Matsuhidai
Maruetsu Sakaecho Store	6-384 Sakaecho	Livre Keisei Miyakodai Store	4-9-1 Miyakodai
AEON FOOD STYLE Shinmatsudo Store	3-2-2 Shinmatsudo	Super Courant D'air Shinmatsudo Store	1-14-13 Yokosuka
Maruetsu Takatsuka Store	165-1 Takatsukashinden	Hallo! Mart Mutsumi Store	4-204-2 Rokkoudai
Top Parque Tokiwadaira Ekimae Store	3-1-1 Tokiwadaira	City Hall Main Office 1F	387-5 Nemoto
SEIYU Tokiwadaira Store	3-11-1 Tokiwadaira	Health & Welfare Hall (Fureai 22)	3-7-1 Gokonishi
York Price Goko Store	5-22-3 Tokiwadaira	Higashi-Matsudo Branch Office (Higamatsu Terrace)	2-14-1 Higashimatsudo

Collection by the recycling activities (group collection)

When disposing of papers, clothes, bottles, cans, and PET bottles, actively participate in the recycling activities of local community groups (neighborhood association, residents' association, etc.). Confirm the collection items, dates and locations with each organization.

For details of the recycling activities, confirm on the city's website using the QR code to the right or the following URL.
https://www.city.matsudo.chiba.jp/kurashi/gomi_shinyou/shudankaishu/sixyuudankaisixyuu.html
 Environmental Services Section, Administration Unit ☎047-366-7332



Sorting Classification for Each Item

How to Use

- 1 Find the "item" in alphabetical order.
- 2 Check the sorting "classification" column.

- Burnable** Burnable garbage
- Non-burnable** Non-burnable garbage
- Papers** Recyclable items (paper)
- Clothes** Recyclable items (cloth)
- Btls/Cans** Recyclable items (bottles and cans)
- Hazard** Hazardous and other garbage
- Recy/Plas** Recyclable plastic items
- Oth Plas** Non-recyclable plastic garbage (other than plastic containers and wrapping)
- Bulk** Bulk garbage
- Prohib** Items not handled by city
- Others** Check disposal location

- 3 Check disposal location.
 (When requesting collection of bulk garbage on an individual basis, handling fee for each item is ¥1,000. When carrying into the garbage processing facility, the fee will be ¥17.6 (¥16 + tax) per 1kg * Less than 20kg is considered to be 20kg and charged ¥352 (¥320 + tax)).

How to Dispose/Request of Bulk Garbage >>> See Page 9

* The following lists garbage from households with frequent inquiries.

Item	Classification	Disposal Point(s)
A		
Agricultural chemicals, dangerous drugs, solvents	Prohib	Consult retailers or specialized companies.
Air conditioners	Prohib	Listed in the Household Appliance Recycling Act See Page 11
Air purifiers	Non-burnable	Smaller than 50cm
	Bulk	50cm or larger
Album (plastic)	Oth Plas	Burnable when cut to smaller than 30cm; remove metal parts
Albums (paper)	Burnable	Burnable when cut to smaller than 50cm; remove metal parts
Aquariums (including whole sets)	Non-burnable	Smaller than 50cm
	Bulk	50cm or larger
Artificial flowers	Oth Plas	Smaller than 30cm
	Non-burnable	30cm or larger but smaller than 50cm
	Bulk	50cm or larger
B		
Baby bathtubs (bathtubs for babies)	Bulk	
Baby buggies	Bulk	

Item	Classification	Disposal Point(s)
Backpacks (cloth, genuine leather)	Burnable	Smaller than 50cm
	Bulk	50cm or larger
	Others	Place usable items into "Shoes, Bags, and Belts" Collection Box See Page 25
Backpacks (vinyl, synthetic leather)	Oth Plas	Smaller than 30cm
	Non-burnable	30cm or larger but smaller than 50cm
	Bulk	50cm or larger
	Others	Place usable items into "Shoes, Bags, and Belts" Collection Box See Page 25
Bags (genuine leather)	Burnable	Smaller than 50cm
	Bulk	50cm or larger
	Others	Place usable items into "Shoes, Bags, and Belts" Collection Box See Page 25
Bags (synthetic leather)	Oth Plas	Smaller than 30cm
	Non-burnable	30cm or larger but smaller than 50cm
	Bulk	50cm or larger
	Others	Place usable items into "Shoes, Bags, and Belts" Collection Box See Page 25
Balls (rubber, vinyl)	Oth Plas	Smaller than 30cm
	Non-burnable	30cm or larger but smaller than 50cm
	Bulk	50cm or larger

Item	Classification	Disposal Point(s)
Bamboo blinds (bamboo or reed)	Burnable	Smaller than 50cm
	Bulk	50cm or larger
Bamboo brooms	Burnable	Smaller than 50cm
	Bulk	50cm or larger
Barbells	Non-burnable	Smaller than 50cm, less than 20kg
	Bulk	50cm or larger, 20kg or more
Barrels	Prohib	Consult retailers or specialized companies.
Bats (metal)	Non-burnable	
Bats (plastic)	Oth Plas	Smaller than 30cm
	Non-burnable	30cm or larger but smaller than 50cm
	Bulk	50cm or larger
Bats (wood)	Non-burnable	
Batteries (for fishing)	Non-burnable	* City does not handle car batteries
Bed pads	Bulk	Up to 3 items are treated as 1 item
Beds	Bulk	
Belts (genuine leather) Cut to smaller than 50cm	Burnable	Remove buckles and discard as Non-burnable
	Others	Place usable items into "Shoes, Bags, and Belts" Collection Box See Page 25
Belts (synthetic leather) Cut to smaller than 30cm	Oth Plas	Remove buckles and discard as Non-burnable
	Others	Place usable items into "Shoes, Bags, and Belts" Collection Box See Page 25
Bicycles, tricycles, and sports unicycles	Non-burnable	Label as "ゴミ" (garbage) Electric power bicycles and electricity assisted bicycles are Bulk
Binders (plastic) * Burnable after removing the metal parts	Oth Plas	Smaller than 30cm
	Non-burnable	30cm or larger but smaller than 50cm
	Bulk	50cm or larger
Binders (wood, paper)	Burnable	* Burnable after removing the metal parts
Blankets (ones with cotton or sponge insulation, including quilts)	Bulk	Oth Plas if cut to smaller than 30cm
Blankets (ones without cotton or sponge insulation, including two-ply)	Clothes	Fold to size 50cm or smaller, bundle with a string or place in a plastic bag, and clearly specify as "ぬのるい" (clothes) Do not discard on a day when it is raining or expected to rain
Blenders (for cooking)	Non-burnable	

Item	Classification	Disposal Point(s)
Blood pressure meters (electrical)	Non-burnable	Mercury type is Hazard
Boards (metal, smaller than 2m)	Non-burnable	
Boards (wood)	Burnable	Length smaller than 50cm, thickness smaller than 10cm
	Bulk	Length 50cm or larger, thickness smaller than 10cm
Book shelves	Bulk	
Books (books, magazines)	Papers	Tie with string crosswise See Page 5 List of reuse shops in the city See Page 29
Bottle caps (metal)	Non-burnable	
Bottle caps (plastic)	Oth Plas	
Bottles (glass, for food or beverage)	Btls/Cans	* Non-burnable for heat resistance glass or not for food or beverage
Bowling balls	Non-burnable	
Branches (pruned branches)	Others	Collected on Non-burnable Garbage and Recyclable Items collection days Cut to length smaller than 50cm and thickness smaller than 10cm, and bundle with string
Bricks	Non-burnable	Crush to fist-size and discard in small amount (up to two bags at one time)
Brooms (any material)	Non-burnable	Regardless of size and material
Bubble wraps (bubble wrapper, air cushion, etc.)	Recy/Plas	
Buckets (metal, smaller than 50cm)	Non-burnable	
	Oth Plas	Smaller than 30cm
Buckets (plastic)	Non-burnable	30cm or larger but smaller than 50cm
	Bulk	50cm or larger
Button batteries	Prohib	Place it into a collection box at retailers, etc.
C		
Cables, cords	Non-burnable	
Cameras	Non-burnable	
Candles	Burnable	
Canvas	Burnable	Smaller than 50cm
	Bulk	50cm or larger

Item	Classification	Disposal Point(s)
Carbon papers (copy slips for courier service, etc.)	Burnable	
Cardboards	Papers	See Page 5
Carpets	Non-burnable	Fold to 4.5 tatami mat size* and bundle with string
	Bulk	Exceeding 4.5 tatami mat size.
Cassette tapes	Oth Plas	Wrap with adhesive gummed tape one-by-one
Cat litter	Burnable	
CD, MD, DVD, FD, Blu-ray discs	Oth Plas	
Child seats (regardless of materials and usage)	Bulk	
Closets	Bulk	
Cloth-drying stands	Bulk	1 pair is treated as 1 item
Clothes	Clothes	Fold to size 50cm or smaller, bundle with a string or place in a plastic bag, and clearly specify as “ぬのるい” (clothes) Do not discard on a day when it is raining or expected to rain
Clothes cases (any material)	Non-burnable	Smaller than 80cm * Only 1 can be disposed at once
	Bulk	80cm or larger is bulk garbage (up to 3 single shelf cases are considered as 1 item, multi-shelf cases are 1 item each)
Clothes dryers	Prohib	Listed in the Household Appliance Recycling Act See Page 11
Clothes hangers (metal)	Non-burnable	
Clothes hangers (plastic)	Oth Plas	Smaller than 30cm
	Non-burnable	30cm or larger but smaller than 50cm
	Bulk	50cm or larger
Clothes hangers (wood)	Burnable	Smaller than 50cm
	Bulk	50cm or larger
Coin-type batteries	Hazard	Place in a transparent or semi-transparent plastic bag Clearly specify as “ゆうがいごみ” (hazardous garbage)
Concrete stand	Bulk	Non-burnable if it can be crushed to fist size * Up to 2 items are treated as 1 item
Container packaging Plastic (bags, containers, bottles)	Recy/Plas	Oth Plas if it is dirty
Convection microwave ovens	Bulk	
Cool air fans	Bulk	

Item	Classification	Disposal Point(s)
Cooler boxes	Oth Plas	Smaller than 30cm
	Non-burnable	30cm or larger but smaller than 50cm
	Bulk	50cm or larger
Cooling pillows	Oth Plas	Cut to smaller than 30cm
Cores for rolls	Papers	Classified as magazines Details on Page 5
Cosmetics bottles	Non-burnable	Empty the contents
Cosmetics cases (such as eye shadow, foundation, etc., with mirror)	Non-burnable	
Cosmetics cases (such as eye shadow, foundation, etc., without mirror)	Oth Plas	
Cotton blankets, towels, wrapping clothes	Clothes	Fold to size 50cm or smaller, bundle with a string or place in a plastic bag, and clearly specify as “ぬのるい” (clothes) Do not discard on a day when it is raining or expected to rain
Crib mobiles (including ones that run on batteries, for baby)	Non-burnable	Smaller than 50cm
	Bulk	50cm or larger
Crib mobiles (toys for baby, smaller than 30cm)	Oth Plas	
Crossties (for gardening)	Prohib	Consult retailers or specialized companies.
Cups (metal, pottery, porcelain, glass)	Non-burnable	
Cups (plastic)	Oth Plas	
Curing sheets	Oth Plas	Smaller than 30cm
	Non-burnable	30cm or larger but smaller than 50cm
	Bulk	50cm or larger
Curtain rails (metal)	Non-burnable	Smaller than 2m
	Prohib	Directly carry in to Matsudo City Recycle Center if larger than 2m * From April 2022
Curtain rails (plastic)	Oth Plas	Cut to smaller than 30cm
Curtain rails (wood)	Burnable	Cut to smaller than 50cm
Curtains (excluding vinyl)	Clothes	Fold to size 50cm or smaller, bundle with a string or place in a plastic bag, and clearly specify as “ぬのるい” (clothes) Do not discard on a day when it is raining or expected to rain

Item	Classification	Disposal Point(s)
Cushions	Oth Plas	Smaller than 30cm
	Non-burnable	30cm or larger but smaller than 80cm
	Bulk	80cm or larger * Up to 5 items are treated as 1 item
Cutting boards (plastic)	Oth Plas	Smaller than 30cm
	Non-burnable	30cm or larger but smaller than 50cm
	Bulk	50cm or larger
Cutting boards (wood)	Burnable	Smaller than 50cm
	Bulk	50cm or larger
D		
Dehumidifiers	Non-burnable	Smaller than 50cm
	Bulk	50cm or larger
Desiccants	Oth Plas	
Desk lamps	Non-burnable	Smaller than 50cm
	Bulk	50cm or larger
Desks	Bulk	
Detergents, soaps (solid)	Burnable	Burnable for the liquid absorbed in cloth, etc.
Diapers	Burnable	Remove the fecal matter
Diatomite products	Hazard	Smaller than 50cm Place in a transparent or semi-transparent plastic bag Clearly specify as “ ゆうがいごみ ” (hazardous garbage)
	Bulk	50cm or larger
	Others	See Page 7 for recalled products
Dish dryers, dish washers	Non-burnable	Smaller than 50cm
Dish dryers, dish washers	Bulk	50cm or larger
Dishes (metal, pottery, porcelain, glass)	Non-burnable	Smaller than 50cm
	Bulk	50cm or larger
Dishes (plastic)	Oth Plas	Smaller than 30cm
	Non-burnable	30cm or larger but smaller than 50cm
	Bulk	50cm or larger
Dishes (wood)	Burnable	Smaller than 50cm
	Bulk	50cm or larger
Doll cases (glass, metal)	Non-burnable	Smaller than 50cm
	Bulk	50cm or larger
Doll cases (plastic)	Oth Plas	Smaller than 30cm
	Non-burnable	30cm or larger but smaller than 50cm
	Bulk	50cm or larger

Item	Classification	Disposal Point(s)
Doll cases (wood)	Burnable	Smaller than 50cm
	Bulk	50cm or larger
Doll houses	Oth Plas	Smaller than 30cm
	Non-burnable	30cm or larger but smaller than 50cm
	Bulk	50cm or larger
Dolls (glass, metal)	Non-burnable	Smaller than 50cm
	Bulk	50cm or larger
Dolls (plastic)	Oth Plas	Smaller than 30cm
	Non-burnable	30cm or larger but smaller than 50cm
	Bulk	50cm or larger
Dolls (wood)	Burnable	Smaller than 50cm
	Bulk	50cm or larger
Doors (metal, smaller than 2m)	Non-burnable	Directly carry in to Matsudo City Recycle Center if larger than 2m * From April 2022
Doors (plastic, smaller than 2m)	Bulk	Directly carry in to Matsudo City Recycle Center if larger than 2m * From April 2022
Doors (wood, smaller than 2m)	Bulk	Directly carry in to Matsudo City Recycle Center if larger than 2m * From April 2022
Dry batteries	Hazard	Place in a transparent or semi-transparent plastic bag Clearly specify as “ ゆうがいごみ ” (hazardous garbage)
Dryers	Non-burnable	
Dumbbells	Non-burnable	Less than 20kg
Dumbbells	Bulk	20kg or more
E		
Earthen pots	Non-burnable	
Electric blankets	Bulk	
Electric carpets	Non-burnable	Fold to 4.5 tatami mat size* and bundle with string
	Bulk	Exceeding 4.5 tatami mat size.
Electric fans (propeller type)	Non-burnable	
Electric fans (tower type)	Non-burnable	Smaller than 50cm
	Bulk	50cm or larger
Electric kettles	Non-burnable	
Electrical (assisting) bicycles batteries	Hazard	Clearly specify as “ ゆうがいごみ ” (hazardous garbage) Or, place it into a collection box at retailers, etc.
Electrical bicycles	Bulk	

Item	Classification	Disposal Point(s)
Electrical carts	Prohib	Consult retailers or specialized companies.
Empty food cans (aluminum, steel)	BtIs/Cans	Empty the contents and rinse with water
Envelopes	Papers	Classified as magazines Details on Page 5
Eyeglasses	Non-burnable	
F		
Fabrics (other than roll)	Clothes	Fold to size 50cm or smaller, bundle with a string or place in a plastic bag, and clearly specify as “ぬのるい” (clothes) Do not discard on a day when it is raining or expected to rain
Fabrics (rolls smaller than 50cm)	Burnable	
Fallen leaves	Others	Collected on Non-burnable Garbage and Recyclable Items collection days Place in a transparent or semi-transparent bag that shows the inside, or in a bag authorized by Matsudo City for burnable garbage
Fan heaters (other than petroleum, kerosene)	Non-burnable Bulk	Smaller than 50cm 50cm or larger
Fan heaters (petroleum, kerosene)	Bulk	
Feminine hygiene products	Burnable	
Files (paper)	Papers	Classified as magazines Details on Page 5 * Burnable after removing the metal parts
Files (paper, vinyl)	Oth Plas	* Burnable after removing the metal parts
Fire extinguishers (ones such as placed in a facility)	Prohib	Consult retailers or specialized companies.
Fire extinguishers (spray cans type)	Non-burnable	Empty the contents Directly carry in to Matsudo City Recycle Center if the contents cannot be emptied * From April 2022
Fireworks (including unused)	Burnable	Discard in small quantities after sufficiently soaked in water
Fishing rods (carbon)	Oth Plas	Smaller than 30cm
	Non-burnable	30cm or larger but smaller than 50cm
	Bulk	50cm or larger
Fishing rods (steel)	Non-burnable	
Flares (unused)	Prohib	Consult retailers or specialized companies.
Flares (used)	Oth Plas	

Item	Classification	Disposal Point(s)
Flashlights (metal, plastic)	Non-burnable	Remove the batteries and dispose them as Hazardous garbage
Fliers, advertisements, etc.	Papers	See Page 5
Floor grates (metal)	Bulk	
Floor grates (plastic)	Oth Plas	Smaller than 30cm
	Non-burnable Bulk	30cm or larger but smaller than 50cm 50cm or larger
Floor grates (wood)	Burnable	Smaller than 50cm
	Bulk	50cm or larger
Floppy discs	Oth Plas	
Fluorescent tubes, fluorescent lamps	Hazard	Place in a transparent or semi-transparent plastic bag Clearly specify as “ゆうがいごみ” (hazardous garbage)
Folding pipe chairs	Non-burnable	
Food processors	Non-burnable	
Frames	Non-burnable	Smaller than 50cm
	Bulk	50cm or larger
Frying pans	Non-burnable	
Fuel additives (gas treatments)	Prohib	Consult retailers or specialized companies.
Full-length mirrors	Non-burnable	Smaller than 50cm
	Bulk	50cm or larger
Fusuma sliding doors	Bulk	Up to 3 items are treated as 1 item
Futon covers	Clothes	Fold to size 50cm or smaller, bundle with a string or place in a plastic bag, and clearly specify as “ぬのるい” (clothes) Do not discard on a day when it is raining or expected to rain
Futon dryers	Non-burnable	
Futons	Bulk	Up to 3 items are treated as 1 item
G		
Game equipment	Non-burnable	
Game software	Oth Plas	
Garden stakes (metal, smaller than 2m)	Non-burnable	
Gas cylinders (for gas lighters, for curling irons, for portable gas stoves, for camping)	Non-burnable	Empty the contents Directly carry in to Matsudo City Recycle Center if the contents cannot be emptied * From April 2022

Item	Classification	Disposal Point(s)
Gas cylinders (for propane)	Prohib	Consult retailers or specialized companies.
Gas ranges (built-in type)	Bulk	* Only the ones removed by yourself
Gas ranges (excluding built-in type)	Non-burnable	
Gasoline	Prohib	Consult retailers or specialized companies.
Gel mats (cooling mats, mattress type)	Bulk	Up to 3 items are treated as 1 item
Glass	Non-burnable	Smaller than 50cm
	Bulk	50cm or larger
Globes	Oth Plas	Smaller than 30cm
	Non-burnable	30cm or larger but smaller than 50cm
	Bulk	50cm or larger
Gloves (genuine leather)	Burnable	
Gloves (synthetic leather)	Oth Plas	
Golf bags (same when together with clubs)	Bulk	
Golf balls	Oth Plas	
Golf clubs	Non-burnable	Bundle with string when there are more than one
Grasses	Others	Collected on Non-burnable Garbage and Recyclable Items collection days Place in a transparent or semi-transparent bag that shows the inside, or in a bag authorized by Matsudo City for burnable garbage
H		
Halogen heaters (fan shaped)	Non-burnable	
Halogen heaters (other than fan shaped)	Non-burnable	Smaller than 50cm
	Bulk	50cm or larger
Hats (plastic without brim)	Clothes	Place in a plastic bag, and clearly specify as “ぬのるし” (clothes) Do not discard on a day when it is raining or expected to rain Oth Plas for the ones with brim
Health appliances (metal)	Non-burnable	Smaller than 50cm
	Bulk	50cm or larger
Health appliances (plastic)	Oth Plas	Smaller than 30cm
	Non-burnable	30cm or larger but smaller than 50cm
	Bulk	50cm or larger

Item	Classification	Disposal Point(s)
Heaters (electric, gas)	Non-burnable	Smaller than 50cm
	Bulk	50cm or larger
Heaters (petroleum, kerosene)	Bulk	
Hedge trimmers (metal)	Non-burnable	Smaller than 50cm
	Bulk	50cm or larger
Helmets (metal)	Non-burnable	
Helmets (plastic)	Oth Plas	
Hose reels only (metal)	Non-burnable	Smaller than 50cm
	Bulk	50cm or larger
Hose reels only (plastic)	Oth Plas	Smaller than 30cm
	Non-burnable	30cm or larger but smaller than 50cm
Hose reels (with hose)	Bulk	50cm or larger
		Also OK to separate hose and hose reel (refer to each item)
Hoses (for water, for gas) Cut to smaller than 30cm	Oth Plas	
Hot plates	Non-burnable	
Hot water bottles (metal)	Non-burnable	
Hot water bottles (plastic, rubber)	Oth Plas	Smaller than 30cm
	Non-burnable	30cm or larger but smaller than 50cm
Humidifiers	Non-burnable	Smaller than 50cm
	Bulk	50cm or larger
I		
IH cooking heater	Non-burnable	Smaller than 50cm
	Bulk	50cm or larger
Ink cartridges	Oth Plas	
Ironing boards	Non-burnable	Regardless of size and legs can be folded
	Bulk	50cm or larger and cannot fold the legs
Irons	Non-burnable	

Item	Classification	Disposal Point(s)
J		
Japanese cushions	Oth Plas	Smaller than 30cm
	Non-burnable	30cm or larger but smaller than 80cm
	Bulk	80cm or larger * Up to 5 items are treated as 1 item
K		
Kerosene cans (metal)	Non-burnable	Empty the contents
Kettles	Non-burnable	
Keyboards (for PC)	Non-burnable	
Keyboards (musical instrument)	Bulk	
Kimono (Japanese dress, yukata), Fabrics	Clothes	Fold to size 50cm or smaller, bundle with a string or place in a plastic bag, and clearly specify as “ぬのるい” (clothes) Do not discard on a day when it is raining or expected to rain
Kitchen knives	Non-burnable	Wrap in newspaper, etc., and label “きけん” (dangerous)
Knives	Non-burnable	Wrap in newspaper, etc., and label “きけん” (dangerous)
L		
Ladders (metal, smaller than 2m)	Non-burnable	Directly carry in to Matsudo City Recycle Center if larger than 2m * From April 2022
Laptop PCs	Others	Collected by the small appliances collection box or retail shops, collect by a courier service with ReNet Japan Recycle, or consult manufacturers, etc. See Page 26 Make sure to erase the personal information at your own risk
Laundry poles (metal, smaller than 2m)	Non-burnable	Directly carry in to Matsudo City Recycle Center if larger than 2m * From April 2022
Laundry hanging dryers (any material)	Non-burnable	Regardless of size and material
Lawn mowers (household; engine type)	Prohib	Consult retailers or specialized companies.
Lawn mowers (household; push type and electrical)	Non-burnable	
Legless chairs	Bulk	
Lids of bath tub (plastic)	Non-burnable	① Accordion type should be rolled up and tied with string ② Separated type should be bundled and tied with string
Light bulbs	Non-burnable	

Item	Classification	Disposal Point(s)
Lighters (disposable)	Hazard	Place in a transparent or semi-transparent plastic bag Clearly specify as “ゆうがいごみ” (hazardous garbage)
Lint roller main bodies (metal)	Non-burnable	
Lint roller main bodies (plastic)	Oth Plas	Smaller than 30cm
	Non-burnable	30cm or larger but smaller than 50cm
Lockers	Bulk	50cm or larger
	Bulk	
M		
Manicure bottles	Non-burnable	Use up the contents Non-burnable even if the contents have solidified
Masks	Burnable	Place small amount in bags
Massage equipment (including cushion type)	Non-burnable	Smaller than 50cm
	Bulk	50cm or larger
Mats (toilet mats, door mats, bathroom mats, kitchen mats)	Oth Plas	Cut to smaller than 30cm
	Non-burnable	Fold to 4.5 tatami mat size* and bundle with string
Mattress, bed mattress	Bulk	Exceeding 4.5 tatami mat size.
	Bulk	
Microwaves	Non-burnable	Smaller than 50cm
	Bulk	50cm or larger
Mini-components	Non-burnable	Smaller than 50cm
	Bulk	50cm or larger
Mirrors	Non-burnable	Smaller than 50cm
	Bulk	50cm or larger
Mobile phones (remove the batteries)	Others	Collected by the small appliances collection box or retail shops See Page 26 Make sure to erase the personal information at your own risk
Mops (any material)	Non-burnable	Regardless of size and material
Motorcycles, scooters	Prohib	Consult retailers or specialized companies.
N		
Neckties	Oth Plas	Cut to smaller than 30cm
Notebooks	Papers	Bundle with string together with paper boxes, etc. Details on Page 5
O		
Oil (cooking, animal oil)	Burnable	Small amount absorbed in paper, etc.,

Item	Classification	Disposal Point(s)
Oil (cooking, vegetable oil)	Burnable	Burnable when small amount is absorbed in paper, etc. Also collected by used oil collection model project See Page 25
	Others	
Oil (engine oil, kerosene, etc.)	Prohib	Consult retailers or specialized companies.
P		
Pail (wood)	Burnable	Smaller than 50cm
	Bulk	50cm or larger (up to 3 items are treated as 1 item)
Paint	Prohib	Consult retailers or specialized companies.
Paint cans	Non-burnable	Completely use contents then clean
Paints	Prohib	Consult retailers or specialized companies.
Panel heaters	Non-burnable	Smaller than 50cm
	Bulk	50cm or larger
Paper cartons (white color inside, paper cartons for milk, etc.)	Papers	Bundle around 10 with a string * Silver color inside Paper cartons for alcoholic beverage, etc., are burnable
Paper containers of detergents and incense sticks (scented)	Burnable	
Paper (documents, copy paper)	Papers	Classified as magazines Details on Page 5
Parasols, beach parasols	Bulk	
PCs	Prohib	See Page 12 for how to discard desktop PCs Place laptop PCs in a small appliances collection box See Page 26
PET bottle caps	Recy/Plas	
PET bottles	Others	See Page 13
Photographs, photographic paper	Burnable	
Pianos	Prohib	Consult retailers or specialized companies.
Picnic sheets	Oth Plas	Smaller than 30cm
	Non-burnable	30cm or larger but smaller than 50cm
	Bulk	50cm or larger
Pillows	Oth Plas	Smaller than 30cm
	Non-burnable	30cm or larger but smaller than 80cm
	Bulk	80cm or larger * Up to 5 items are treated as 1 item

Item	Classification	Disposal Point(s)
Pizza boxes (dirty with food and oil)	Burnable	
Plant pots (metal, pottery, porcelain)	Non-burnable	Smaller than 50cm
	Bulk	50cm or larger (up to 3 metal items are treated as 1 item)
Plant pots (plastic)	Oth Plas	Smaller than 30cm
	Non-burnable	30cm or larger but smaller than 50cm
	Bulk	50cm or larger (up to 3 items are treated as 1 item)
Planters (metal)	Non-burnable	Smaller than 50cm
	Bulk	50cm or larger
Planters (plastic)	Oth Plas	Smaller than 30cm
	Non-burnable	30cm or larger but smaller than 50cm
	Bulk	50cm or larger
Plaster boards	Prohib	Consult retailers or specialized companies.
Plastic models	Oth Plas	Cut to smaller than 30cm
Polyethylene tanks (for petroleum, kerosene) * Empty the contents	Non-burnable	Smaller than 50cm
	Bulk	50cm or larger
Portable gas stoves	Non-burnable	
Post cards (crimped post cards, confidential post cards)	Burnable	
Post cards (other than crimped post cards, confidential post cards)	Papers	Classified as magazines Details on Page 5
Pots	Non-burnable	
Pots (aluminum, enamel)	Non-burnable	
	Oth Plas	Smaller than 30cm
Potties	Non-burnable	30cm or larger but smaller than 50cm
	Bulk	50cm or larger
Pumps (for kerosene, bath)	Non-burnable	
R		
Rackets (carbon, metal, plastic)	Non-burnable	Cut the strings and discard as Oth Plas
Rackets (wood)	Burnable	Cut the strings and discard as Oth Plas
Radios and radio cassette recorders	Non-burnable	Batteries are Hazard
Raincoats	Oth Plas	Cut to smaller than 30cm
Range cabinets	Bulk	

Item	Classification	Disposal Point(s)
Razor blades	Non-burnable	Wrap in newspaper and clearly specify as “きけん” (dangerous)
Record discs	Oth Plas	Paper jackets are Papers
Record players	Non-burnable	
Reed blinds	Burnable	Cut to smaller than 50cm
	Bulk	(50cm or larger)
Refrigerants	Oth Plas	
Refrigerators (including wine cellars, cooling boxes, hot/cold refrigerator), Freezers	Prohib	Listed in the Household Appliance Recycling Act See Page 11
Remote controllers	Non-burnable	Batteries are Hazard
Rice bins (metal)	Non-burnable	Smaller than 50cm
	Bulk	50cm or larger
	Oth Plas	Smaller than 30cm
Rice bins (plastic)	Non-burnable	30cm or larger but smaller than 50cm
	Bulk	50cm or larger
Rice cake machines (electrical)	Non-burnable	
Rice cookers, rice cooker/warmers	Non-burnable	
Roller bags	Non-burnable	Smaller than 50cm
	Bulk	50cm or larger
Ropes (hemp)	Burnable	Cut to smaller than 50cm
Ropes (vinyl)	Oth Plas	Cut to smaller than 30cm
Rubber bands	Oth Plas	
S		
Safes (50cm or larger and general fire-proof)	Prohib	Consult retailers or specialized companies.
Safes (portable, smaller than 50cm)	Non-burnable	
Sat	Prohib	Consult retailers or specialized companies.
Saws	Non-burnable	Wrap in newspaper, etc., and label “きけん” (dangerous)
School bags (genuine leather)	Burnable	
School bags (synthetic leather)	Non-burnable	
Scissors	Non-burnable	Wrap in newspaper, etc., and label “きけん” (dangerous)
Sea shells (medium-, small-, or large-size clams, etc.)	Burnable	

Item	Classification	Disposal Point(s)
Sewing machines (desktop)	Non-burnable	
Sewing needles	Non-burnable	Wrap in newspaper, etc., and label “きけん” (dangerous)
Sheds (disassembled, smaller than 2m)	Bulk	
Sheets (ones with cotton or sponge insulation, including quilts)	Bulk	Oth Plas if cut to smaller than 30cm
Sheets (ones without cotton or sponge insulation, including boa sheets)	Clothes	Fold to size 50cm or smaller, bundle with a string or place in a plastic bag, and clearly specify as “ぬのるい” (clothes) Do not discard on a day when it is raining or expected to rain
Shelf boards (metal, 2m or smaller)	Non-burnable	Directly carry in to Matsudo City Recycle Center if larger than 2m * From April 2022
	Oth Plas	Smaller than 30cm
Shelf boards (plastic)	Non-burnable	30cm or larger but smaller than 50cm
	Bulk	50cm or larger
Shelf boards (wood)	Burnable	Smaller than 50cm
	Bulk	50cm or larger
Shoes (genuine leather)	Burnable	Place usable items into “Shoes, Bags, and Belts” Collection Box See Page 25
	Others	
Shoes (synthetic leather)	Oth Plas	Place usable items into “Shoes, Bags, and Belts” Collection Box See Page 25
	Others	
Shoji (paper sliding doors)	Bulk	Up to 3 items are treated as 1 item
Ski boards	Bulk	1 pair is treated as 1 item
Ski carriers	Bulk	
Ski shoes	Oth Plas	
Ski stock	Non-burnable	
Sleeping bags (futon)	Bulk	
Sludge, etc., from cleaning ditch (household)	Prohib	Consult specialized companies
Sludge, etc., from cleaning ditch (public roads)	Others	Consult Road Maintenance Div.
Small rechargeable batteries	Prohib	Place it into a collection box at retailers, etc.
Sofa beds	Bulk	
Sofas	Bulk	Sofa seating up to 3 people is treated as 1 item Ottoman is counted as 1 person
Solid fuels	Prohib	Consult retailers or specialized companies.

Item	Classification	Disposal Point(s)
Spades, shovels (metal)	Non-burnable	
Spades, shovels (plastic)	Oth Plas	Smaller than 30cm
	Non-burnable	30cm or larger but smaller than 50cm
Spades, shovels (plastic)	Bulk	50cm or larger
	Non-burnable	Empty the contents Directly carry in to Matsudo City Recycle Center if the contents cannot be emptied * From April 2022
Spray cans	Non-burnable	
Steam cleaners	Non-burnable	* Similar shape as vacuum cleaners
Steamers (aluminum, enamel pots)	Non-burnable	
Stepadders (metal, smaller than 2m)	Non-burnable	Directly carry in to Matsudo City Recycle Center if larger than 2m * From April 2022
	Oth Plas	Smaller than 30cm
Stepadders (plastic)	Non-burnable	30cm or larger but smaller than 50cm
	Bulk	50cm or larger
Stereo sets	Non-burnable	Smaller than 50cm
	Bulk	50cm or larger
Stockings	Oth Plas	Cut to smaller than 30cm
Stones (fist-size or smaller)	Non-burnable	
Stuffed animals	Oth Plas	Smaller than 30cm
	Non-burnable	30cm or larger but smaller than 80cm
Stuffed animals	Bulk	80cm or larger (up to 5 items are treated as 1 item)
Stuffed specimen	Burnable	Smaller than 50cm
	Bulk	50cm or larger
Styrofoams (clean)	Recy/Plas	
Styrofoams (dirty)	Oth Plas	Cut to smaller than 30cm
Suitcases	Non-burnable	Smaller than 50cm
	Bulk	50cm or larger
Surfboards (smaller than 2m)	Bulk	
T		
Tableware (metal, pottery, porcelain, or glass)	Non-burnable	Smaller than 50cm
	Bulk	50cm or larger
Tableware (plastic)	Oth Plas	Smaller than 30cm
	Non-burnable	30cm or larger but smaller than 50cm
Tableware (plastic)	Bulk	50cm or larger

Item	Classification	Disposal Point(s)
Tableware (wood)	Burnable	Smaller than 50cm
	Bulk	50cm or larger
Tatami mats, inner parts of tatami mats	Prohib	Consult retailers or specialized companies. * Burnable if cut to smaller than 30cm
Tea chests	Bulk	
Telephones (including telephones with FAX)	Non-burnable	
Telescopes	Non-burnable	Smaller than 50cm
	Bulk	50cm or larger
Tension rods (metal, 2m or smaller)	Non-burnable	Directly carry in to Matsudo City Recycle Center if larger than 2m * From April 2022
	Oth Plas	Smaller than 30cm
Tension rods (plastic)	Non-burnable	30cm or larger but smaller than 50cm
	Bulk	50cm or larger
Tension rods (wood)	Burnable	Smaller than 50cm
	Bulk	50cm or larger
Tents	Bulk	
Thermal paper (receipts, FAX sheets, etc.)	Burnable	
Thermometers (electronic/LCD)	Non-burnable	* Mercury type is Hazard
Tire chains (metal or rubber)	Non-burnable	
Tires (car)	Prohib	Consult retailers or specialized companies.
Tissue paper boxes (paper)	Papers	Classified as magazines Details on Page 5
Toaster ovens	Non-burnable	
Toilet seats (with washing function, with Washlet, 50cm or larger)	Bulk	
Toilet seats (without washing function, smaller than 50cm)	Non-burnable	
Tool boxes (metal)	Non-burnable	Smaller than 50cm
	Bulk	50cm or larger
Tool boxes (plastic)	Oth Plas	Smaller than 30cm
	Non-burnable	30cm or larger but smaller than 50cm
Tool boxes (plastic)	Bulk	50cm or larger
	Non-burnable	Smaller than 50cm
Toys (metal)	Non-burnable	Smaller than 50cm
	Bulk	50cm or larger

Item	Classification	Disposal Point(s)
Toys (wood)	Burnable	Smaller than 50cm
	Bulk	50cm or larger
Toys (plastic)	Oth Plas	Smaller than 30cm
	Non-burnable	30cm or larger but smaller than 50cm
	Bulk	50cm or larger
Trays (perishable foods, prepared foods, etc.)	Recy/Plas	Clean them by rinsing with water, etc.
TV stands	Bulk	
TVs (tube, LCD, plasma)	Prohib	Listed in the Household Appliance Recycling Act See Page 11
U		
Umbrella (including folding)	Non-burnable	
USB memories	Non-burnable	Make sure to erase the personal information at your own risk
V		
Vacuum cleaners	Non-burnable	Non-burnable even for hose only
Videotapes	Oth Plas	Wrap with adhesive gummed tape one-by-one so tape does not spill out
Vinyl bags	Oth Plas	Cut to smaller than 30cm
Vinyl sheets	Oth Plas	Cut to smaller than 30cm
	Non-burnable	30cm or larger but smaller than 50cm
	Bulk	50cm or larger
W		
Wagons	Bulk	
Wall papers (cut to smaller than 30cm)	Oth Plas	

Item	Classification	Disposal Point(s)
Wall papers (rolled up)	Prohib	Consult retailers or specialized companies.
Wash basins (plastic)	Oth Plas	Smaller than 30cm
Wash basins (plastic)	Non-burnable	30cm or larger but smaller than 50cm
	Bulk	50cm or larger
Washing machines	Prohib	Listed in the Household Appliance Recycling Act See Page 11
Water bottles (stainless)	Non-burnable	* Plastics are Oth Plas
Water heaters (household)	Non-burnable	
Weight scales, body fat scales	Non-burnable	
Wheelchairs (manual, electrical)	Non-burnable	Label as “ごみ” (garbage) Electric cart cannot be collected
Wheels (for automobiles)	Prohib	Consult retailers or specialized companies.
White boards (ones that magnet does not attach)	Oth Plas	Smaller than 30cm
	Non-burnable	30cm or larger but smaller than 50cm
White boards (ones that magnets attach)	Bulk	50cm or larger
	Non-burnable	Smaller than 50cm
Wireless equipment (walkie-talkies)	Bulk	50cm or larger
Wireless equipment (walkie-talkies)	Non-burnable	Batteries are Hazard
Word processors (desktop type)	Bulk	
Word processors (laptop type)	Non-burnable	Label as “ワープロ” (word processor) (to differentiate with PCs)

Use the garbage sorting app for smartphone “さんあ〜る” (threeR)

An app sharing information regarding garbage such as the garbage collection days and separation methods are provided free of charge!

* User is responsible for all usage fees.



● App installation

Search “さんあ〜る” in the app store and download.

● Major features

- Collection date calendar
- Search of items in alphabetical order
- How to sort
- FAQ

● Foreign language support

This app supports English.

● Register the region of residence

Setting → District Setting → Chiba → MATSUDO CITY → Select region



Used Cooking Oil is Collected from the Households

To use the used cooking oil from households as a raw material of a biodiesel fuel, Matsudo City is executing the “Used Oil Collection Model Project” from April 2010.

How to Discard Used Oil

Strain the used oil with a strainer, place it in a PET bottle (500ml to 2000ml), close the cap tightly, and bring it to the collection site.

* **Only liquid vegetable oil.**

* **Solidified oil, animal oil (butter, lard, etc.), or oil from business facilities cannot be collected.**

Collection sites	Address	Telephone	Remarks
Matsudo City Hall, front of Security Office	387-5 Nemoto	047-704-2010 (Waste Management Div.)	Mon to Fri; 8:30 a.m. to 5:00 p.m. (excluding holidays and December 29 to January 3)
ENEOS gas station Hakki Sangyo	162-3 Konemoto	047-363-2211	Every day (excluding December 29 to January 3) 9 a.m. to 7 p.m.
Idemitsu gas station Sakamaki Shoten	7-33-8 Koganehara	047-341-3004	Every day (excluding December 29 to January 3) 9 a.m. to 7 p.m.

Use the “Shoes, Bags, and Belts” Collection Box

“Shoes, bags, belts” are collected as “burnable garbage” or “non-recyclable plastic garbage (other than plastic containers and wrapping)” depending on the material and then incinerated, but the ones placed in this collection box are “reused” abroad. If you have any reusable “shoes, bags, belts”, please place in this collection box.

How to dispose

Place in a transparent or semi-transparent plastic bag.
(Separate the shoes from others)

Item	Items that can be collected	Items that cannot be collected	Remarks
Shoes	Leather shoes, sneakers, pumps, sandals, indoor shoes	Rain boots, boots, spiked shoes, wooden clogs, safety shoes, single shoe	These will be reused as is. Do not dispose following.
Bags	Backpacks, shoulder bags, handbags, duffel bags	Bags with wheels (suitcases, carry-on bags, etc.), golf bags, school bags	① Ones that are heavily dirty or worn out ② Ones with foul odor ③ Ones that are wet
Belts	Leather, cloth, enamel	Ones that cannot be used	④ Ones with mold

Collection sites

There may be restriction for usage of the facility due to the COVID-19 prevention measure changing the hours of operation, so please confirm in advance via websites, etc.

	Location	Hours of operation	Closed	
City Hall, Branch Office, Civic Center	City Hall New Annex B1 entrance	8:30 a.m. to 5:00 p.m.	Saturdays, Sundays, holidays, national holidays, year-end/New Year	However, when the close date falls on holiday, it is compensated to later day
	Kogane Branch Office			
	Shin-Matsudo Civic Center	9 a.m. to 9 p.m.	First Mondays, year-end/New Year	
	Mabashi Civic Center		Second Mondays, year-end/New Year	
	Minoridai Civic Center		Second Mondays, year-end/New Year	
	Tokiwadaira Civic Center		First Mondays, year-end/New Year	
	Kogasaki Civic Center		Fourth Mondays, year-end/New Year	
	Nijusseikigaoka Civic Center		First Mondays, year-end/New Year	
	Hachigasaki Civic Center		Fourth Mondays, year-end/New Year	
	Mutsumi Civic Center		First Mondays, year-end/New Year	
	Matsuhidai Civic Center		Second Mondays, year-end/New Year	
Sports Facilities	Sports Park Maintenance Office entrance			Fourth Mondays, year-end/New Year
	Clean Center Sports Facility entrance	Mondays, year-end/New Year		
	Tobu Sports Park Gymnasium entrance			
	Wanagaya Sports Center entrance	Third Mondays, year-end/New Year		
	Koganehara Gymnasium	Fourth Mondays, year-end/New Year		
	Tokiwadaira Gymnasium			

Small Appliances Collection Box

As one of the initiatives geared towards constructing a zero-waste society that considers the environment, Matsudo City is proactively recycling small appliances.

Currently, used small appliances are collected once a week on “Non-burnable Garbage” collection day, but it can also be collected in the collection boxes listed below, so please utilize them.

Collected Items

Appliances that fit into the opening of the collection box (30cm wide × 15cm high)

Laptop PCs, tablets, mobile phones, video cameras, IC recorders, portable game devices, digital cameras, AC adapters, electronic dictionaries, portable music players

Collection sites

Location	Hours of operation	Closed	Location	Hours of operation	Closed
City Hall Main Office 1F	8:30 a.m. to 5:00 p.m.	Saturdays, Sundays Holidays, national holidays Year-end/New Year (Dec. 29 to Jan. 3)	Akira Civic Center	9 a.m. to 9 p.m.	Third Mondays, year-end/New Year
Koganehara Branch Office			Kogane-Kita Civic Center		Third Mondays, year-end/New Year
Mutsumi Branch Office			Matsuhidai Civic Center		Second Mondays, year-end/New Year
Shin-Matsudo Branch Office			Yabashira Civic Center		Fourth Mondays, year-end/New Year
Kogane Branch Office			Hachigasaki Civic Center		Fourth Mondays, year-end/New Year
Mabashi Branch Office			Clean Center Sports Facilities		Mondays, year-end/New Year
Tokiwadaira Civic Center	9 a.m. to 5 p.m.	First Mondays, year-end/New Year	Tobu Sports Park Gymnasium entrance	8:30 a.m. to 9:00 p.m.	Mondays, year-end/New Year
Minoridai Civic Center		Second Mondays, year-end/New Year	Wanagaya Sports Center entrance		Third Mondays, year-end/New Year, Jan. 4
Kogasaki Civic Center		Fourth Mondays, year-end/New Year	General Welfare Hall		Year-end/New Year
Goko Civic Center		Third Mondays, year-end/New Year	Health & Welfare Hall (Fureai 22)		Last Saturdays of the month Year-end/New Year

Beverage Paper Carton Collection Box

Currently, beverage paper cartons from households are collected once a week on “Recyclable Items (1) Paper and cloth” collection day, but they can also be collected in the 9 collection boxes installed in the city listed below, so please utilize them.



Target Items

Paper cartons with paper carton mark

* Only the ones without aluminum coating inside.

* If there is a plastic spout, remove it before discarding.

Check for
this mark



Collection sites

There may be restriction for usage of the facility due to the COVID-19 prevention measure changing the hours of operation, so please confirm in advance via websites, etc.

Location			Hours of operation	Closed
Matsudo City Hall Main Office 1F	Tokiwadaira Branch Office	Kogane Branch Office	8:30 a.m. to 5:00 p.m.	Saturdays, Sundays Holidays, national holidays Year-end/New Year
Koganehara Branch Office	Mutsumi Branch Office	Mabashi Branch Office		
Shin-Matsudo Branch Office	Yakiri Branch Office	Higashi-Matsudo Branch Office		

Kurinkuru Cooperative Stores



Matsudo City is certifying retail stores, etc., proactively executing the reduction of garbage and recycling activities as “Kurinkuru cooperative stores”, addressing reduction of store through cooperation between the consumers and stores, etc.

Contents of garbage reduction measures

- ▶ Reduce ……… Reduction of plastic shopping bags, promotion of simplified packaging, reduction of leftovers at restaurants
- ▶ Reuse ……… Repair service of the products, sales of used items
- ▶ Recycle ……… Collection at the store (bottles, cans, food trays, etc.), recycling of food residue, etc.

Store name	Address	Telephone	Store name	Address	Telephone
1 SEIYU Tokiwadaira Store	3-11-1 Tokiwadaira	047-386-1111	28 Maruetsu Makinohara Store	2-10 Makinohara	047-384-6001
2 York Price Goko Store	5-22-3 Tokiwadaira	047-388-1131	29 Bel'x Goko Store	8-11-1 Goko	047-386-8719
3 Maruetsu Takatsuka Store	165-1 Takatsukashinden	047-391-5131	30 Bel'x Matsuhidai Store	193-1 Matsuhidai	047-383-8719
4 Maruetsu Kamihongo Store	2-57-1 Nakaicho	047-368-2278	31 Hataya Shoten	2-6-1 Goko	047-387-3835
5 Maruetsu Koganehara Store	7-18-3 Koganehara	047-343-1201	32 CREATE SD Matsudo Ooganedaira Store	5-368-1 Ooganedaira	047-312-0521
6 Maruetsu Sakaecho Store	6-384 Sakaecho	047-365-2285	33 CREATE SD Matsudo Koganekiyoshigaoka Store	2-23-2 Koganekiyoshigaoka	047-309-3450
7 Maruetsu Kitamatsudo Store	2220-1 Kamihongo	047-365-7177	34 CREATE SD Matsudo Nijusseikigaoka Store	Matsudo Nijusseikigaokahagicho 19	047-330-1211
8 Ito-Yokado Matsudo Store	1149 Matsudo	047-368-5131	35 CREATE SD Matsudo Hachigasaki Store	2-9-3 Hachigasaki	047-309-2721
9 SEIKATSU-CLUB Consumer Cooperative Shinmatsudo Depot	3-211 Shinmatsudo	047-348-1210	36 Yamaka Co., Ltd.	2-6-11 Kitamatsudo	047-366-0002
10 Hallo! Mart Mabashi Store	Nishimabashiaikawacho 11-1	047-341-4186	37 CREATE SD Kita-Matsudo Store	2-7-10 Kitamatsudo	047-703-3211
11 Hallo! Mart Minoridai Store	575-7 Matsudoshinden	047-368-7077	38 Yukimatsu Chinese Product Store	461-409 Nemoto	047-712-0909
12 Hallo! Mart Mutsumi Store	4-204 Rokkoudai	047-387-6527	39 Maruetsu Higashimatsudo Station Store	2-181 Higashimatsudo	047-311-1191
13 Yaoya Shun	3-130 Ooganedaira	047-343-2756	40 Summit Store Matsudoshinden Store	245-1 Matsudoshinden	047-330-3310
14 Natural Food Iwasawa	5-22-6 Koganehara	047-344-0626	41 TAIRAYA Minoridai Store	1-30-1 Minoridai	047-703-5381
15 Inageya Matsudoshinden Store	418-5 Matsudoshinden	047-366-6599	42 Tobu Store Mabashi Store	2-1 Nishimabashikuramotocho	047-374-6080
16 AEON Kitakogane Store	1 Kogane	047-348-3100	43 CREATE SD Shinmatsudominami Store	3-246 Shinmatsudominami	047-345-0820
17 Livre Keisei Koganehara Store	6-2-13 Koganehara	047-341-2145	44 CREATE SD Matsudo Kamihongo Store	2617-8 Kamihongo	047-308-2026
18 AEON FOOD STYLE Shinmatsudo Store	3-2-2 Shinmatsudo	047-346-3111	45 CREATE SD Matsudo Ooganedaira 2chome Store	2-102 Ooganedaira	047-340-5211
19 Daiei Matsudo Nishiguchi Store AEON FOOD STYLE	4-2 Nemoto	047-368-5111	46 Top Parque Tokiwadaira Ekimae Store	3-1-1 Tokiwadaira	047-387-2170
20 LIFE Matsudo Nijusseikigaoka Store	97 Nijusseikigaokanakamatsucho	047-392-2331	47 LOPIA Matsudo Store	1307-1 Matsudo	047-365-0298
21 Livre Keisei Miyakodai Store	4-9-1 Miyakodai	047-367-7931	48 Bel'x Matsudo Rokkoudai Store	9-73-2 Rokkoudai	047-311-8719
22 Super Courant D'air Shinmatsudo Store	1-14-13 Yokosuka	047-309-6911	49 Bel'x Fine City Higashimatsudo Store	2-5-1 Higashimatsudo	047-393-8719
23 Ito-Yokado Yabashira Store	1-15-8 Higurashi	047-387-1121	50 Bel'x Goko Motoyama Store	1-29-1 Goko	047-389-3719
24 Maruetsu Yagiri Ekimae Store	19-1 Kuriyama	047-331-2801	51 Bel'x Higashimatsudo Store	3-2-1 Higashimatsudo	047-330-8719
25 Comodi-iida Mabashi Store	1422 Mikoze	047-374-6100	52 Bel'x Kitamatsudo Store	2-73-2 Sakaecho	047-367-8719
26 Comodi-iida Kitakogane Store	40-1 Kogane	047-309-5561	53 Comodi-iida Matsudoshinden Store	62-1 Matsudoshinden	047-331-7551
27 Comodi-iida Shinmatsudo Store	5-137 Shinmatsudo	047-309-0031	54 Mammy Mart Matsudo Kogasaki Store	753-1 Kogasaki	047-308-4100

* For details, refer to the Matsudo City website or check each store.

Repair Shops

Here are shops performing repair of everyday objects

There may be some changes, so check in advance.

Products handled	Store name	Shop name
Bags, shoes, clothes repair (invisible mending) * Handles ladies' apparel too	Ginnoito Yabashira Main Store	5-239 Higurashi, Chiba Kaihatsu Yabashira Bldg. 2F TEL047-311-0011
Bags, shoes, clothes repair (invisible mending) * Handles ladies' apparel too	Ginnoito Matsudo Store	1414-1 Matsudo TEL047-710-6528
Bags, shoes, clothes repair (invisible mending) * Handles ladies' apparel too	Ginnoito Goko Store	5-16-10 Tokiwadaira TEL047-387-1811
Bags, shoes, clothes repair (invisible mending, retailoring)	Ginnoito Ito-Yokado Yabashira Store	1-15-8 Higurashi, Ito-Yokado Yabashira Store 2F TEL047-385-0958
Bags, shoes, clothes repair (retailoring), umbrellas, clocks, knife sharpening	Yumekoubou	23-5 Honcho TEL047-362-7441
Bags, shoes, umbrellas, watch battery replacement, knife sharpening	Yumekoubou Yabashira Store	1-15-8 Higurashi, Ito-Yokado Yabashira Store B1 TEL047-388-2592
Bags, shoes, clothes repair (invisible mending, retailoring)	La Terre	553-13 Matsuhidai TEL047-389-1621
Bags, clothes repair (invisible mending, retailoring)	[Tailoring Salon] Encoton	3-2-2 Shinmatsudo, Daiei Shinmatsudo Store 3F TEL047-342-3781
Bags	Yoshida Kaban Kobo	214-1 Oohashi TEL047-391-6466
Clocks	Suzuki Clock Store	15-3 Honcho TEL047-362-3716
Musical instruments	ITOGAKKI Matsudo Store	1174-1 Matsudo TEL047-368-1161
Musical instruments	Sakiya Piano	70-16 Nakawakura TEL047-345-6701
Small appliances (audio, video, household appliances), Toys	Support Office Yoshida	206-7 Takegahana TEL080-3019-3046
Others (general knife sharpening)	Togitada	2862-1 Kamihongo TEL090-4018-7040 FAX047-710-8668
Bags, shoes, umbrellas, clocks, keys	Repair Kobo Bee's	8-11-1 Goko, Super Bel'x Goko Store TEL047-386-5776
Bags, shoes, clocks, keys, watch battery replacement, knife sharpening	Riat! Daiei Matsudo Nishiguchi Store	4-2 Nemoto, Daiei Matsudo Nishiguchi Store 1F TEL047-364-0310

- This list is based on the information provided from each shop. Contact each shop for individual inquiry.
- Shops wishing to be added to the list should contact the Waste Management Div. (Listing is free of charge)
Waste Management Div.: 047-704-2010

How about utilizing the reuse shops?

* Reuse means to "use the product again".

A reuse shop is a shop that sells used products and purchases unused household items as used products (reuse products) if the conditions such as appearance match the age of the product. Shops will be added to the list continuously. * For details, contact each shop.

	Store name	Contact	Hours of operation	Products handled
1	BOOK OFF Route 6 Matsudo Mabashi Store	2276-3 Mabashi TEL047-349-7725	10 a.m. to 9 p.m. Open 7 days a week	Books
2	Manyo Shobo	910-3-101 Kamihongo TEL047-360-6263	10 a.m. to 7 p.m. Closed Sundays and holidays	Books, arts

About "Reuse Kobo Miraizu"

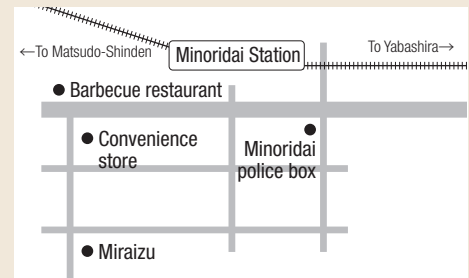
Matsudo City is working on an experimental bulk garbage reuse project in cooperation with "Matsukaze no Kai" and "Social Welfare Corporation Matsusato", working facilities for disabled citizens in Matsudo City. The aim is to reduce waste and increase wages of facility users by selling items that have been discarded as bulk garbage after they have been repaired and cleaned at these facilities. Please visit "Reuse Kobo Miraizu" where these cleaned and repaired items will be sold.

Store Information

[Address] 7-31-1 Minoridai, Matsudo-shi

[Hours] ① Monday to Friday 9 a.m. to 5 p.m.
② Second and fourth Saturdays 10 a.m. to 4 p.m.

[Contact] ☎047-710-7201
FAX047-710-7202



Subsidies for Purchasing of Kitchen Scrap Disposal Containers

[Environmental Management Div., Administration Unit ☎047-366-7332]

The city will subsidize a portion of the costs to purchase compost containers, EM containers, electric kitchen scrap processors, etc. for people who have purchased them in an effort to reduce garbage and recycling.

Eligibility

- Must be head of a household registered as a residence and live in the city
- Must be able to take responsibility for the disposal of kitchen scraps that have been composted and reduced
- Must have no delinquent payments of any city tax
- Must not be a member of any organized crime group as defined in the Matsudo City Ordinance for Eliminating the Organized Crime Groups (2012 Matsudo City Ordinance No. 2), Article 2, Section 3



Eligible Kitchen Scrap Disposals Containers, Etc.

- ① Compost containers Equivalent to 1/2 of the purchasing price (round down amount less than 100 yen)
6,000 yen limit and up to 2 units per 1 year
- ② EM containers Equivalent to 1/2 of the purchasing price (round down amount less than 100 yen)
6,000 yen limit and up to 2 units per 1 year
- ③ Electric kitchen scraps processors ... Equivalent to 1/3 of the purchasing price (round down amount less than 100 yen)
20,000 yen limit and up to 1 units per 1 year



Submit To

Environmental Management Div. (Matsudo City Hall New Annex 6F)

For details on application method and application forms, refer to the Matsudo City website from the QR code to the right, or contact Environmental Management Div.



Matsudo City Household Garbage Visiting Collection Project (Fureai Collection)

Matsudo City is executing a support project in which a staff member visits a household that has difficulty placing household garbage out at the collection site by themselves or cannot solicit the help of others once a week, on the specified day of the week. The staff may visit the household to confirm the well-being of the user if there is no garbage left out.

Eligibility

- ① Must live in Matsudo City
- ② The household must consist of a person who needs nursing care or a physically disabled person (Physical Disability Certificate Class 1 or 2) that cannot carry out the garbage
- ③ The household must not be able to receive support from others to carry out garbage

Documents Required for Application

- Submission from a specialist such as a care manager or a consultation and support specialist is required.
- ① Matsudo City Household Garbage Visiting Collection Project Application Form
 - ② Written opinion
 - ③ In the case of a person who needs nursing care, copy of the Nursing Care Insured Policy Card
 - ④ In the case of a physically disabled person, copy of Physical Disability Certificate Class 1 or Class 2
 - ⑤ Diagram, etc. (photograph is allowed) of the location set as the collection site on the premises of the house



Submit To

Environment Div., Environmental Management Sec. (Matsudo City Hall New Annex 6F)
A review will be done upon submission, and the requester will be notified of the result.

Introduction to Garbage Tour (Facility Tour) [Waste Management Div. ☎047-704-2010]

This is a tour to visit the garbage disposal facilities and commercial recycling facilities, etc. The purpose is to review garbage problems, and reconfirm the importance of further reduction, sorting, and recycling of household garbage.

Due to scheduling of the mini bus, apply at least 2 months before the desired date.

[Schedule] Assemble around 8:50 to 9:30 a.m. (at desired location) ➔

Dismiss around 12:15 p.m. (same location as assembly)

[Eligible] People residing in the city

[Capacity] 10 or more; up to 20 people

[Fee] Free

[Destination] ① Intra-city course (Higurashi Clean Center, commercial recycling facility, Wanagaya Clean Center)

② Papermaking plant course (Hokuetsu Corporation Kanto Plant (Ichikawa))

* ② Papermaking plant course is held only through September to March.



About Discarding Business-related Waste

Business-related waste is garbage produced by companies or stores, and it needs to be discarded using the following methods.

- ① Contract with a "general waste collection company" permitted by the city
 - ② Carry it in to the garbage processing facilities of the city by yourself
- Make sure to contact the facility before bringing the garbage.
 - Paper, cloth, bottles, and cans cannot be carried in.

Contacts

Description	Contacts	Telephone
<ul style="list-style-type: none"> ● Inquiries regarding garbage classification flyer ● Inquiries regarding garbage classification app "さんあ〜る" (threeR) ● Inquiries regarding how to discard bulk garbage, etc. ● Inquiries regarding garbage collection and collection sites ● Inquiries regarding subsidies for the purchase of kitchen scrap disposal containers ● Inquiries regarding group collection, recycling activities incentive institution ● Inquiries regarding illegal dumping of garbage 	Environmental Services Section Matsudo City Household Garbage Consultation Call Center	Toll free 0120-264-057 Some IP phone (fee charged) 050-5358-9687
<ul style="list-style-type: none"> ● Inquiries regarding master plan for waste processing ● Inquiries regarding general waste from business activities ● Inquiries regarding Garbage Tour ● Inquiries regarding "Shoes, Bags, and Belts" Collection Box ● Inquiries regarding small appliances collection box 	Waste Management Div.	047-704-2010



Friendly city, Matsudo.